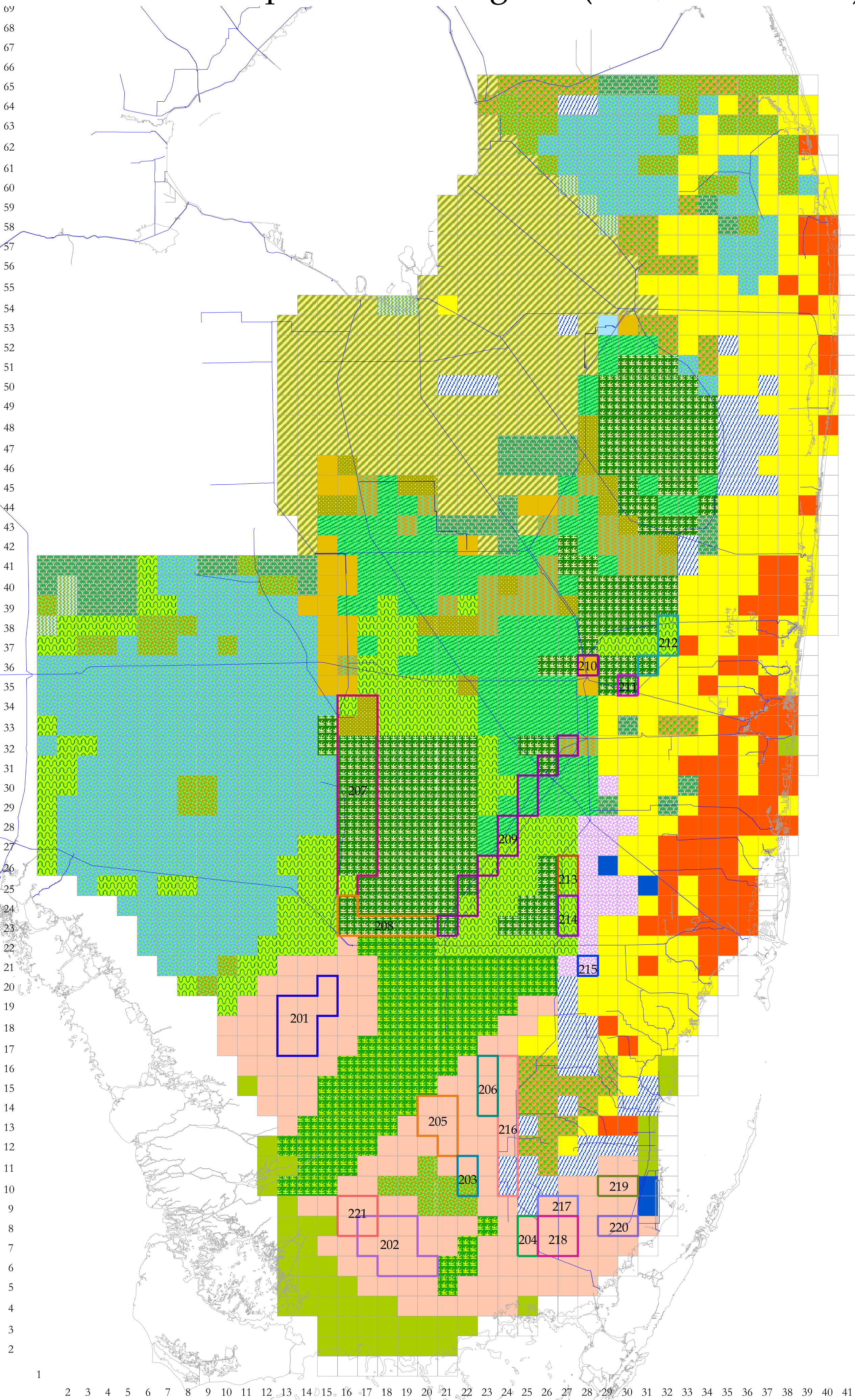


South Florida Water Management Model v3.5

Land Use with Special Issue Regions (RET, March 2001)

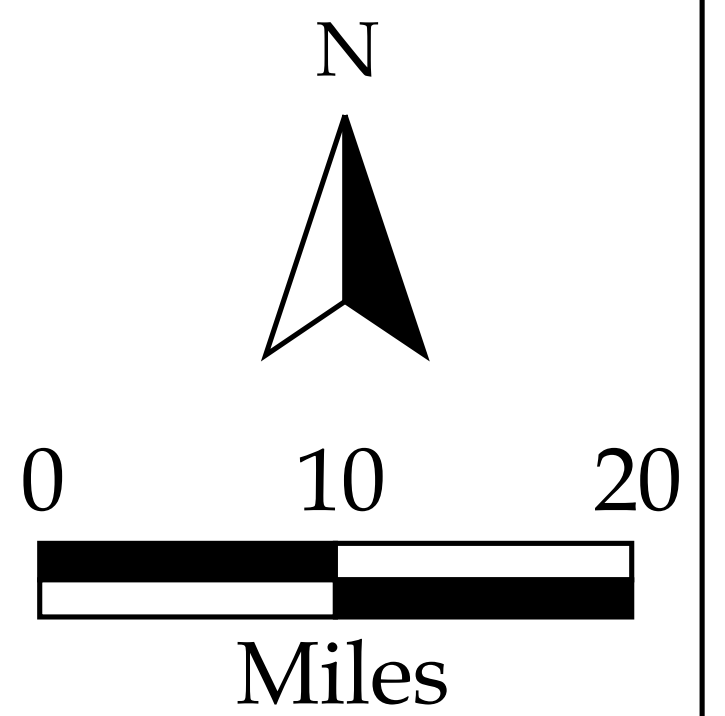
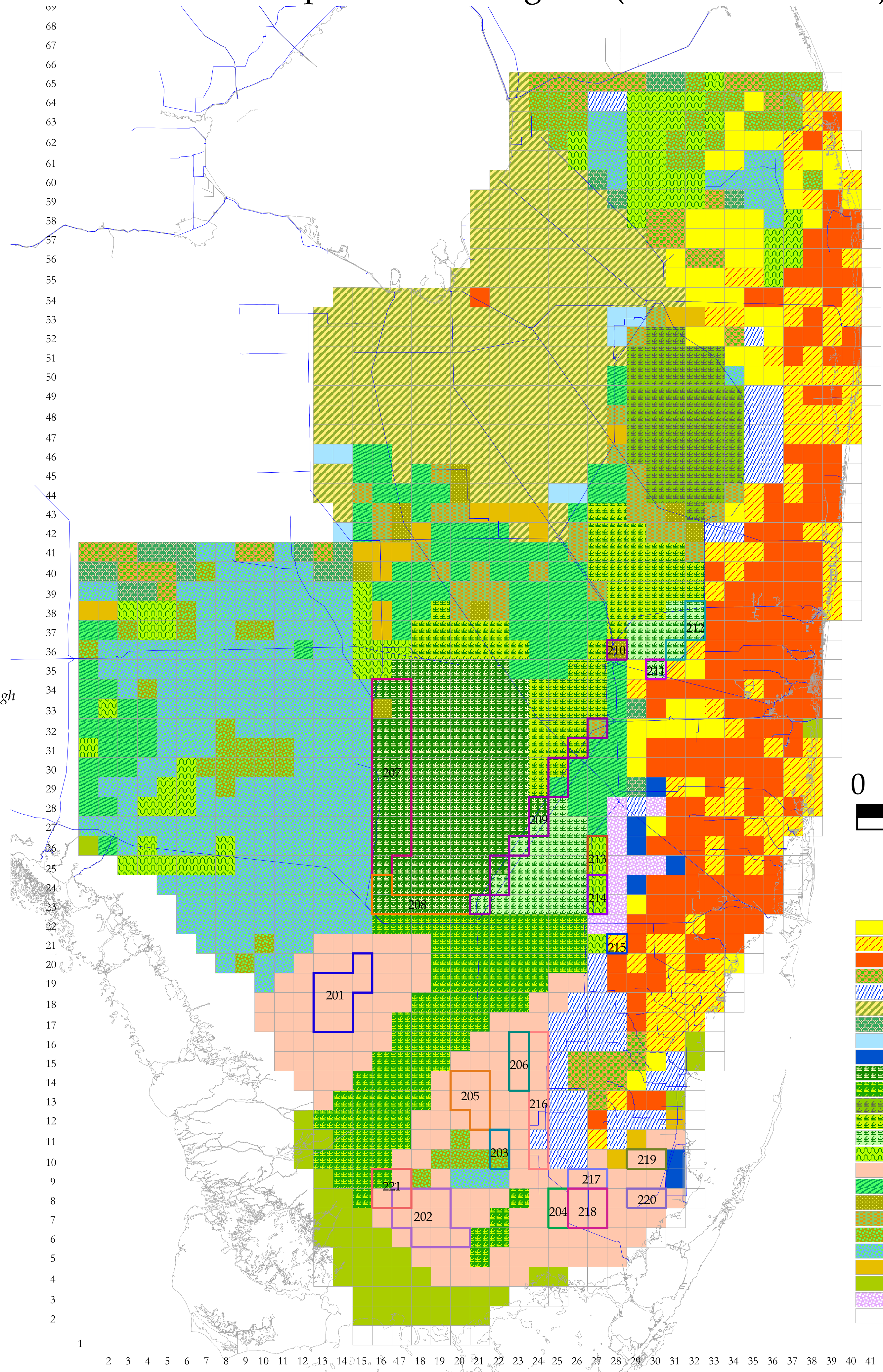


- Special Issue Regions*
- 201 - Cape Sable Sparrow A
 - 202 - Cape Sable Sparrow B
 - 203 - Cape Sable Sparrow C
 - 204 - Cape Sable Sparrow D
 - 205 - Cape Sable Sparrow E
 - 206 - Cape Sable Sparrow F
 - 207 - Western WCA-3A Snail Kite
 - 208 - Southern WCA-3A Snail Kite
 - 209 - L-67 Fisheries
 - 210 - WCA-2B West Refugium
 - 211 - WCA-2B South Refugium
 - 212 - WCA-2B East
 - 213 - Pennsoco Wetlands North
 - 214 - Pennsoco Wetlands South
 - 215 - Bird Drive Wetland
 - 216 - C-111 Buffer
 - 217 - C-111 North
 - 218 - C-111 Perrine Marl Marsh
 - 219 - Model Lands North
 - 220 - Model Lands South
 - 221 - Eastern Edge of Shark River Slough

- Low Density Urban
- High Density Urban
- Citrus
- Row Crops
- Sugar Cane
- Irrigated Pasture
- STA/Reservoir
- Open Water
- Freshwater Marsh
- Modified Ridge & Slough I
- Modified Ridge & Slough II
- Cypress Prairie
- Wet Prairie
- Marl Prairie
- Sawgrass Plains
- Cattail
- Mixed Cattail/Sawgrass
- Forested Uplands
- Forested Wetlands
- Shrubland
- Mangroves
- Melaleuca

South Florida Water Management Model v5.0

Land Use with Special Issue Regions (RET, March 2001)



- Low Density Urban
- Medium Density Urban
- High Density Urban
- Citrus
- Row Crops
- Sugar Cane
- Irrigated Pasture
- STA/Reservoir
- Open Water
- Ridge & Slough I
- Ridge & Slough II
- Ridge & Slough III
- Ridge & Slough IV
- Ridge & Slough V
- Wet Prairie
- Marl Prairie
- Sawgrass Plains
- Cattail
- Mixed Cattail/Sawgrass
- Forested Uplands
- Forested Wetlands
- Shrubland
- Mangroves
- Melaleuca