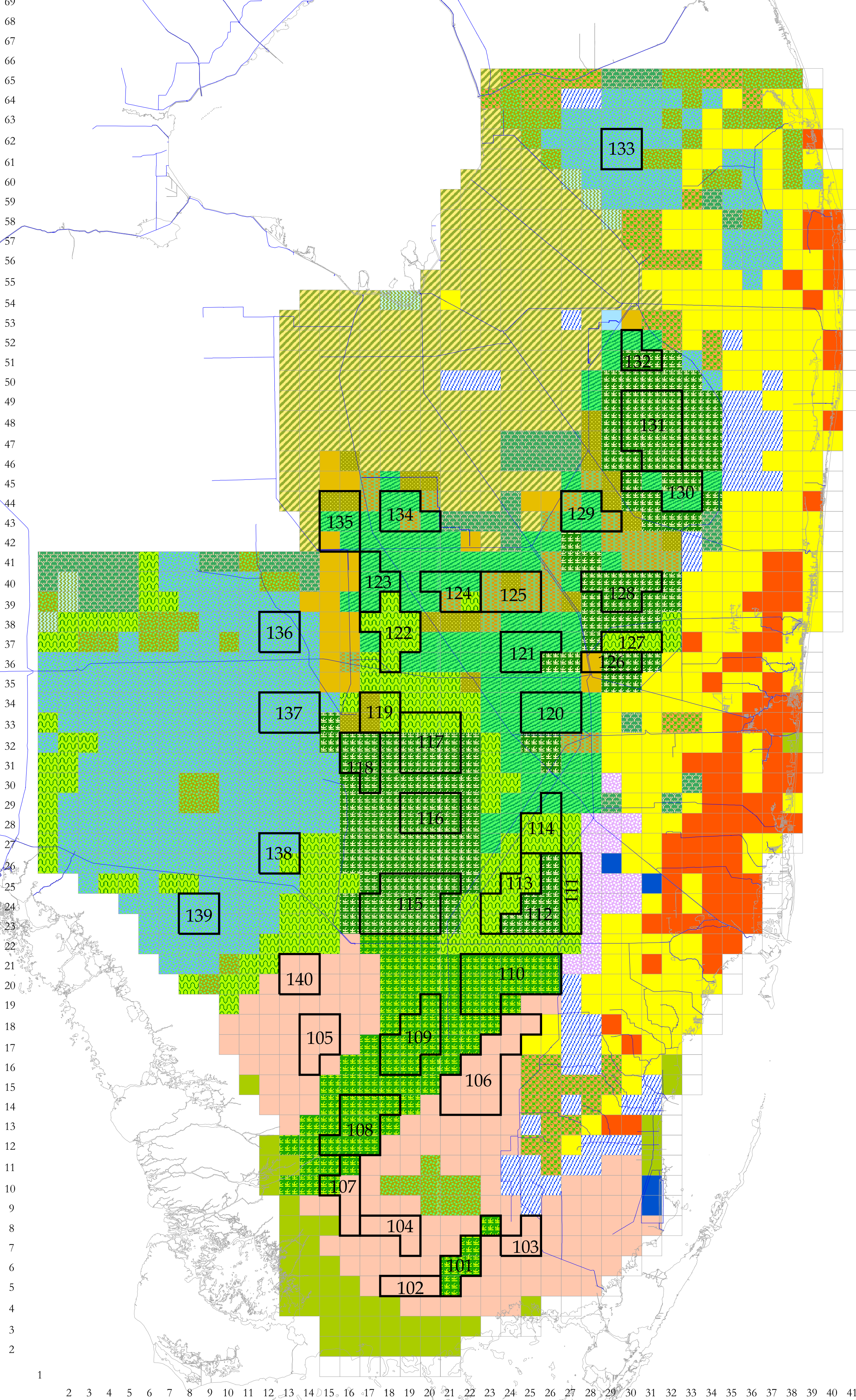


South Florida Water Management Model v3.5

Land Use with Indicator Regions (RET, November 2000)

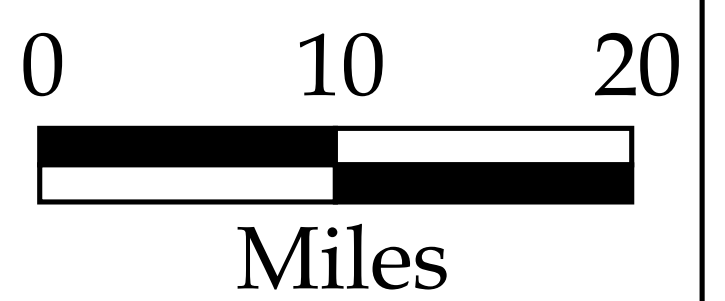
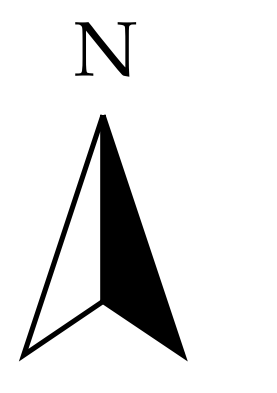
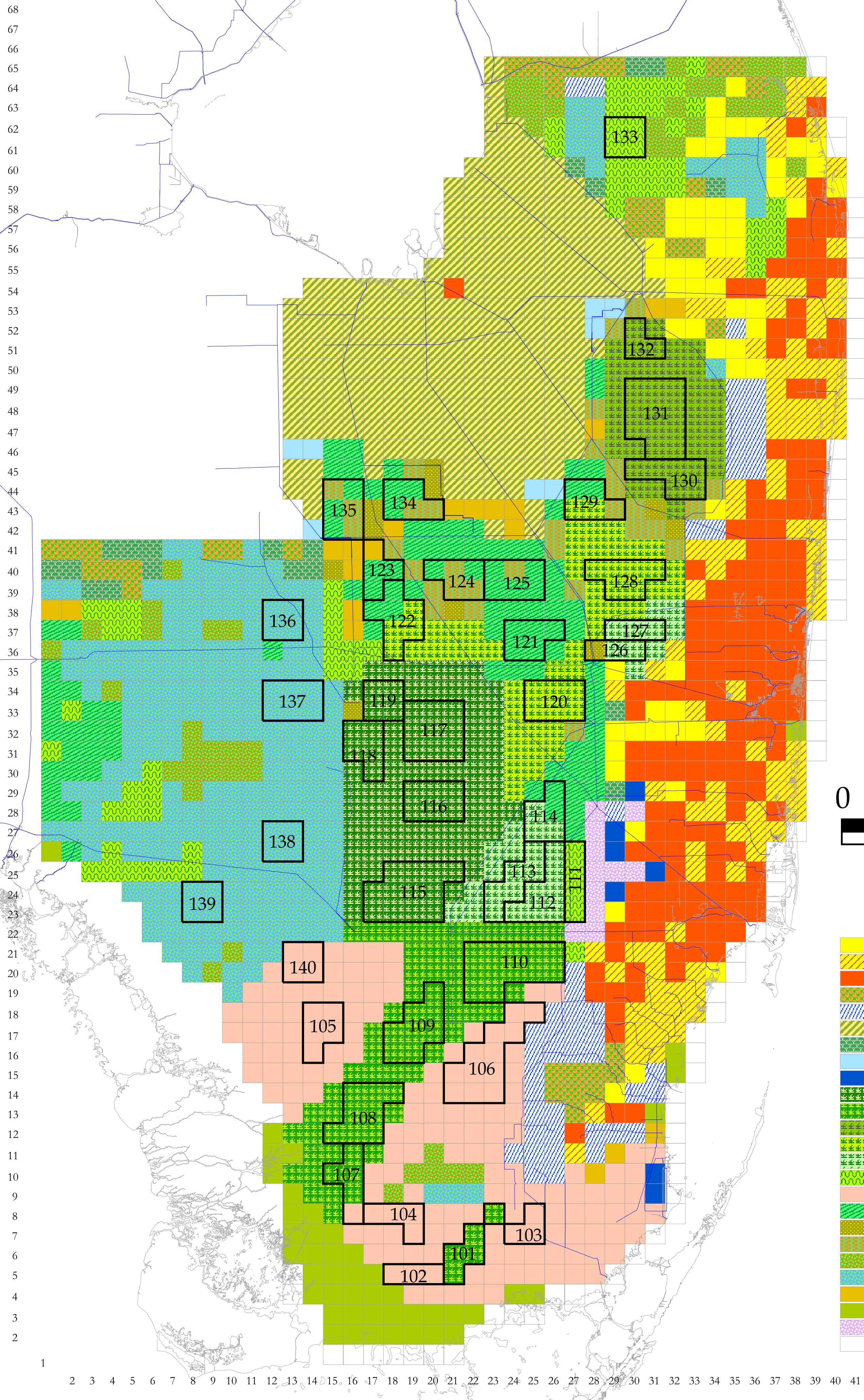


- Indicator Regions*
- 101 - Taylor Slough
 - 102 - Craighead Basin
 - 103 - East Perrine Marl Marsh
 - 104 - West Perrine Marl Marsh
 - 105 - Ochopee Marl Marsh
 - 106 - Rocky Glades
 - 107 - South Shark Slough
 - 108 - SW Shark Slough
 - 109 - Mid Shark Slough
 - 110 - NE Shark Slough
 - 111 - Pennsuco Wetlands
 - 112 - WCA-3B East
 - 113 - WCA-3B West
 - 114 - WCA-3B North
 - 115 - WCA-3A South
 - 116 - WCA-3A South Central
 - 117 - WCA-3A North Central
 - 118 - WCA-3A Gap
 - 119 - WCA-3A West
 - 120 - WCA-3A East
 - 121 - WCA-3A Alley North
 - 122 - WCA-3A NW
 - 123 - WCA-3A NW Corner
 - 124 - WCA-3A North
 - 125 - WCA-3A NE
 - 126 - WCA-2B South
 - 127 - WCA-2B North
 - 128 - WCA-2A South
 - 129 - WCA-2A North
 - 130 - WCA-1 South
 - 131 - WCA-1 Central
 - 132 - WCA-1 North
 - 133 - Corbett
 - 134 - Holey Land
 - 135 - Rotenberger
 - 136 - NE Cypress
 - 137 - Mullet Slough
 - 138 - Dwarf Cypress
 - 139 - Roberts Lake Cypress Strand
 - 140 - Lostman's Slough

- Low Density Urban
- High Density Urban
- Citrus
- Row Crops
- Sugar Cane
- Irrigated Pasture
- STA/Reservoir
- Open Water
- Freshwater Marsh
- Modified Ridge & Slough I
- Modified Ridge & Slough II
- Cypress Prairie
- Wet Prairie
- Marl Prairie
- Sawgrass Plains
- Cattail
- Mixed Cattail/Sawgrass
- Forested Uplands
- Forested Wetlands
- Shrubland
- Mangroves
- Melaleuca

South Florida Water Management Model v5.0

Land Use with Indicator Regions (RET, November 2000)



- Low Density Urban
- Medium Density Urban
- High Density Urban
- Citrus
- Row Crops
- Sugar Cane
- Irrigated Pasture
- STA/Reservoir
- Open Water
- Ridge & Slough I
- Ridge & Slough II
- Ridge & Slough III
- Ridge & Slough IV
- Ridge & Slough V
- Wet Prairie
- Marl Prairie
- Sawgrass Plains
- Cattail
- Mixed Cattail/Sawgrass
- Forested Uplands
- Forested Wetlands
- Shrubland
- Mangroves
- Melaleuca