

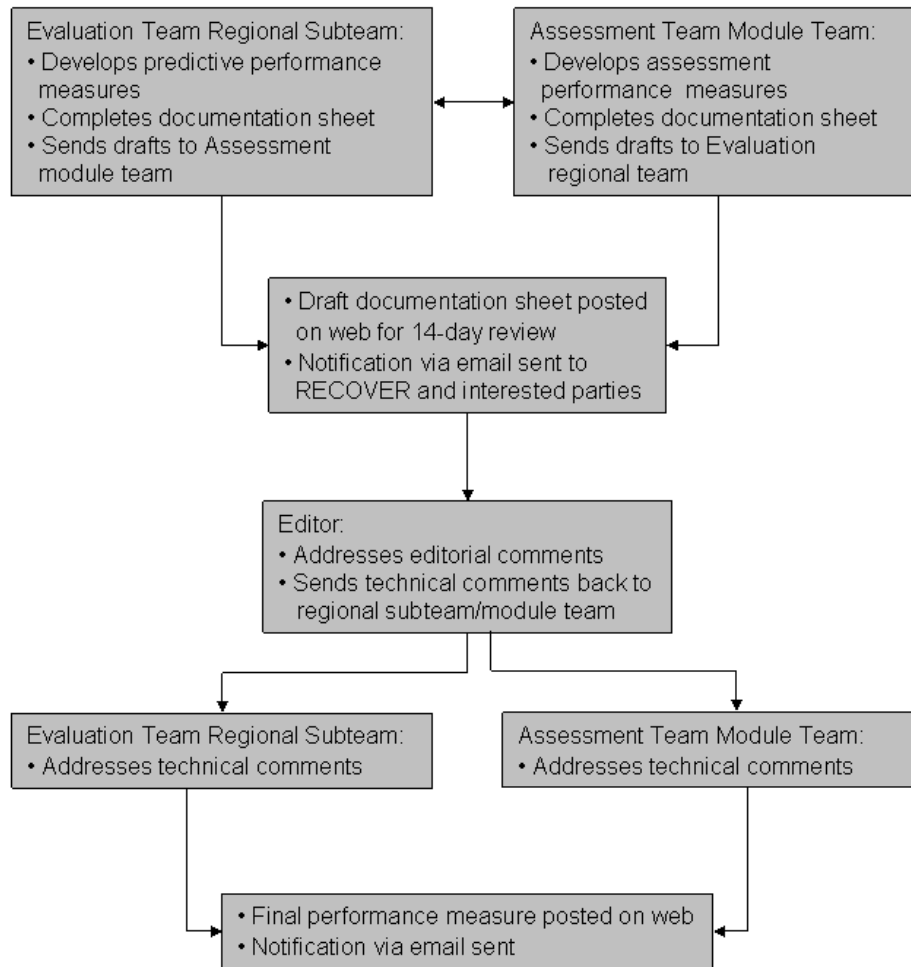
## 15.0 Review Process

Performance measures will be periodically added and refined by RECOVER to incorporate new scientific information and as additional tools become available. Development of and revisions to performance measures are initiated within Evaluation Team regional subteams and Assessment Team module teams based on their needs for evaluating or assessing CERP success. The Evaluation Team has four regional subteams - Greater Everglades, Southern Estuaries, Northern Estuaries and Lake Okeechobee - and a subteam for water supply and flood protection - Lake Okeechobee Service Area/Lower East Coast Service Area. The Assessment Team has module teams (referring to modules in the CERP Monitoring and Assessment Plan documents [RECOVER 2004, 2006]): Greater Everglades, Southern Estuaries, Northern Estuaries and Lake Okeechobee. Any participant in RECOVER can propose a new performance measure to *a module or a regional team*.

Ideally, a performance measure will have both evaluation and assessment applications and regional subteams and module teams will work together to develop and refine a single measure. Some measures will only have one or the other due to lack of tools or information. In this case, subteams and module teams will fill out portions of the performance measure documentation sheet pertaining to their application.

Basic steps of the review and acceptance process are presented in **Figure 15-1**. The Evaluation Team regional subteam or Assessment Team module team will document the performance measure using guidelines provided in Section .0 Criteria and Guidelines for Performance Measure Development. The documentation sheet will be posted on [evergladesplan.org](http://evergladesplan.org) for a 14-day review. The website will clearly note that the performance measure is “under development”. Notification will be sent via email to a broad list of interested parties, including the public, with the link to the website and an invitation to comment. Comments will be sent to a designated editor who will address editorial comments. Technical comments will be forwarded to the team that developed the performance measure. Once comments are incorporated by the team and no controversy has arisen due to comments, the documentation sheet will be reposted and the notation on the website will be changed to “accepted” and the date added. If comments can not be easily addressed or a controversy develops, the performance measure will not be deemed “acceptable”. Instead it will stay “under development” until issues are resolved.

An email with links to accepted performance measures, will be sent to the same mailing list announcing when a final performance measure has been accepted and posted. The accepted performance measure is now ready to be applied for use in conducting regional evaluations/assessments. These applications include 1) regional evaluations conducted by the Evaluation Team, 2) development of project-level performance measures by project teams, 3) development of assessment protocols by the Assessment Team, and 4) interim goals and interim targets recommendations.



**Figure 15-1. Performance measure review process**

**15.1 References**

RECOVER. 2004. CERP Monitoring and Assessment Plan: Part 1 Monitoring and Supporting Research. Restoration Coordination and Verification Program, c/o United States Army Corps of Engineers, Jacksonville District, Jacksonville, FL, and South Florida Water Management District, West Palm Beach, FL. [http://www.evergladesplan.org/pm/recover/recover\\_map.aspx](http://www.evergladesplan.org/pm/recover/recover_map.aspx)

RECOVER. 2006. Monitoring and Assessment Plan (MAP), Part 2, 2006 Assessment Strategy for the MAP, Final Draft. Restoration Coordination and Verification Program, c/o United States Army Corps of Engineers, Jacksonville District, Jacksonville, FL, and South Florida Water Management District, West Palm Beach, FL. December 2006. [http://www.evergladesplan.org/pm/recover/recover\\_map.aspx](http://www.evergladesplan.org/pm/recover/recover_map.aspx)