

Site 1 Impoundment Project

Fran Reich Preserve



Presentation to Public

June 2010



Meeting Overview

- **Welcome and Introductions**
- **Project Purpose and Benefits**
- **Background**
- **Phase 1**
- **Phase 2**
- **Public Comments and Questions**



Team Members



South Florida Water Management District

- Planning Project Manager: Jeff Needle
- Engineering Project Manager: Greg Coffelt



US Army Corps
of Engineers®
Jacksonville District

Army Corps of Engineers

- Project Manager: Jason Harrah
- Engineering Technical Lead: Gerald Deloach
- Environmental Lead: Sue Wilcox
- Geotechnical Lead: Michael Viessman / Elizabeth Landowski
- Civil Engineering: William Schaefer
- Hydraulic Lead: Melissa Reynolds



Site 1 Project Purpose

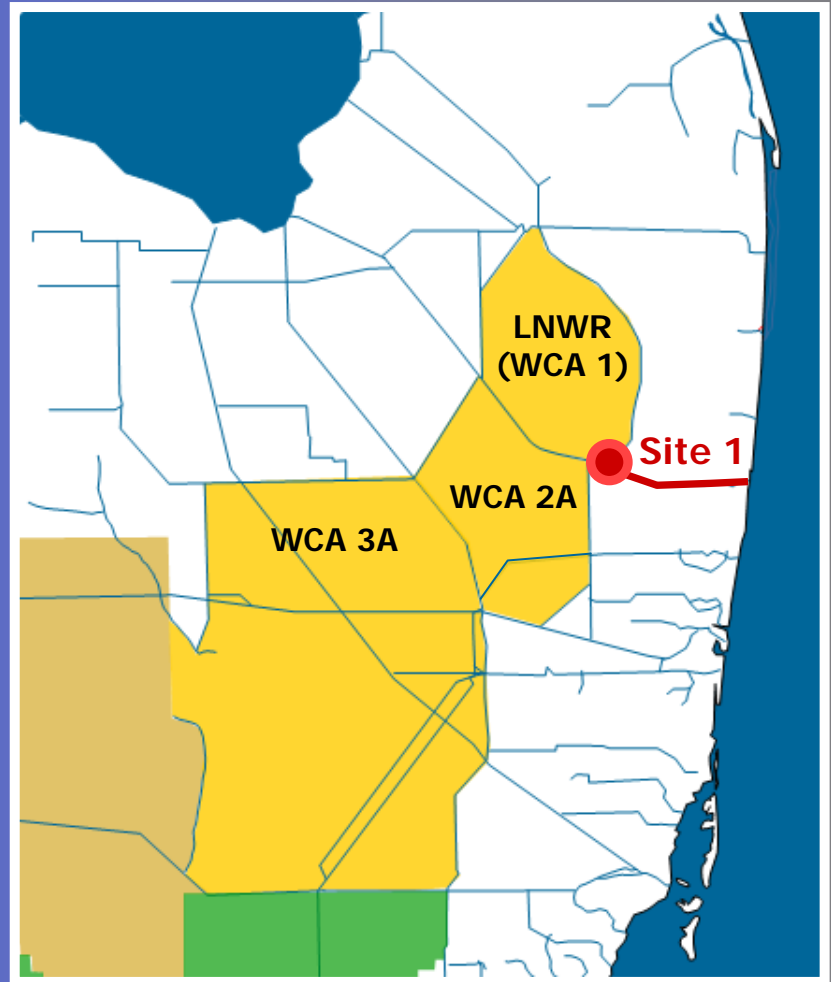
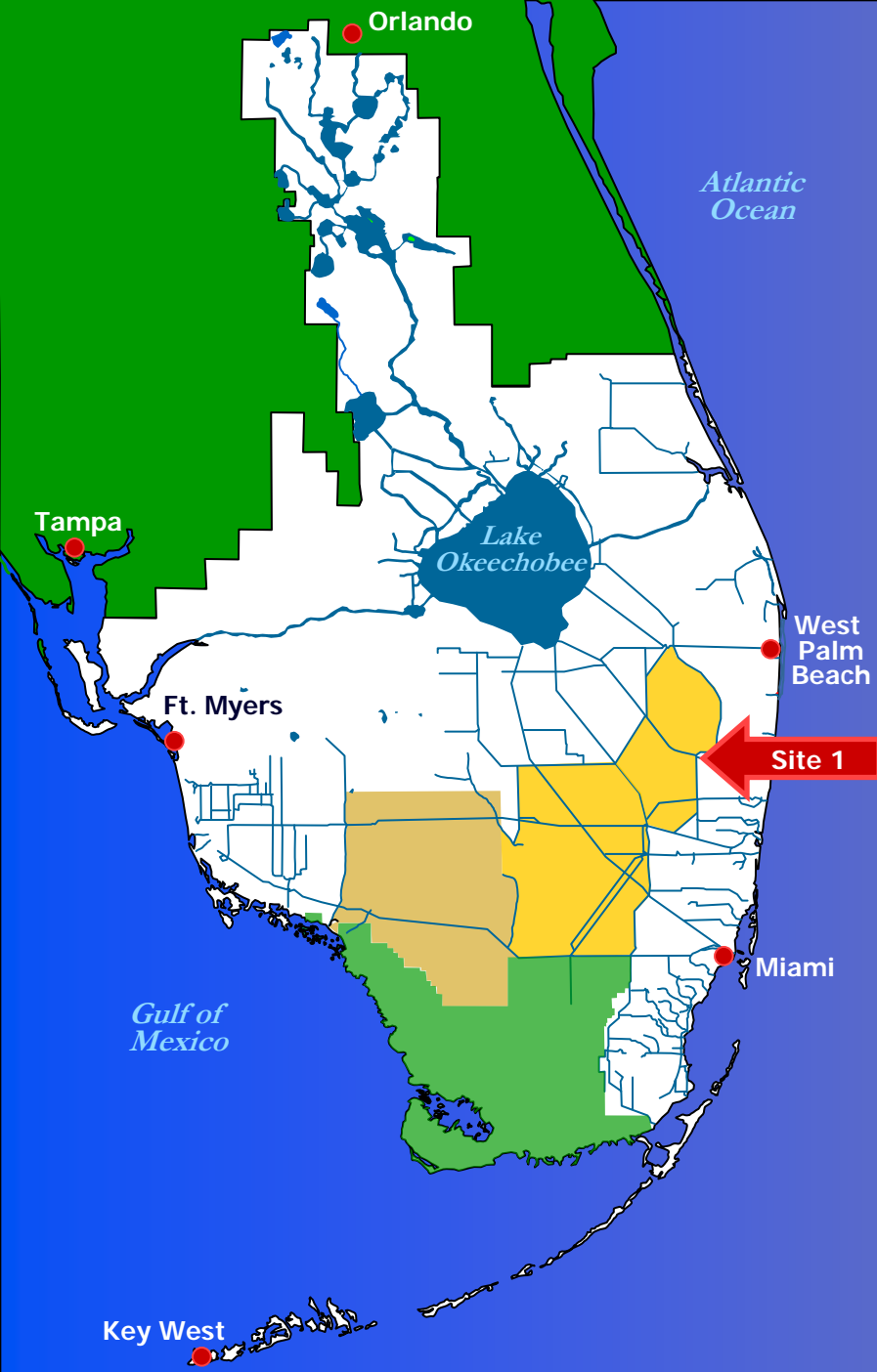
Improve hydro periods and hydro patterns in the Loxahatchee National Wildlife Refuge (Water Conservation Area 1), WCA 2A and the estuarine area at the mouth of the Hillsboro Canal by capturing and storing excess water currently discharged via the canal to the Intra-coastal Waterway

Supplemental deliveries will

- Reduce demands on Lake Okeechobee and LNWR
- Reduce seepage from adjacent natural areas
- Provide groundwater recharge
- Help prevent saltwater intrusion by releasing impounded water back to the Hillsboro Canal when conditions dictate



Site 1 Impoundment Project Location



Planning Phase to Present

- **Final Project Implementation Report (PIR) and Environmental Assessment (EA) completed in Aug 2006**
- **Congress authorized the project for construction in the Water Resource Development Act of 2007**
- **Phase 1**
 - **Completed design in Jun 2010**
 - **Executed Project Partnership Agreement (PPA)**
 - **Certified project real estate**
 - **Completed water reservations/allocation for the natural system**
 - **Advertising plans and specifications for Contract 1**



Planning Phase to Present (cont'd)

- **Design refinements since planning phase**
 - **Removal of wave break steps on interior face of the D-525 embankment due to concerns for wildlife entrapment**
 - **Addition of ~ 5.5 acres of wildlife wetland area in lieu of littoral shelf**
 - **Addition of Aquifer Storage and Recovery (ASR) maintenance corridor and pond sites**



Phase 1, Contract 1

D-525N (L-40 Modifications) and Miscellaneous Features



S-530
Spillway

Loxahatchee National Wildlife Refuge

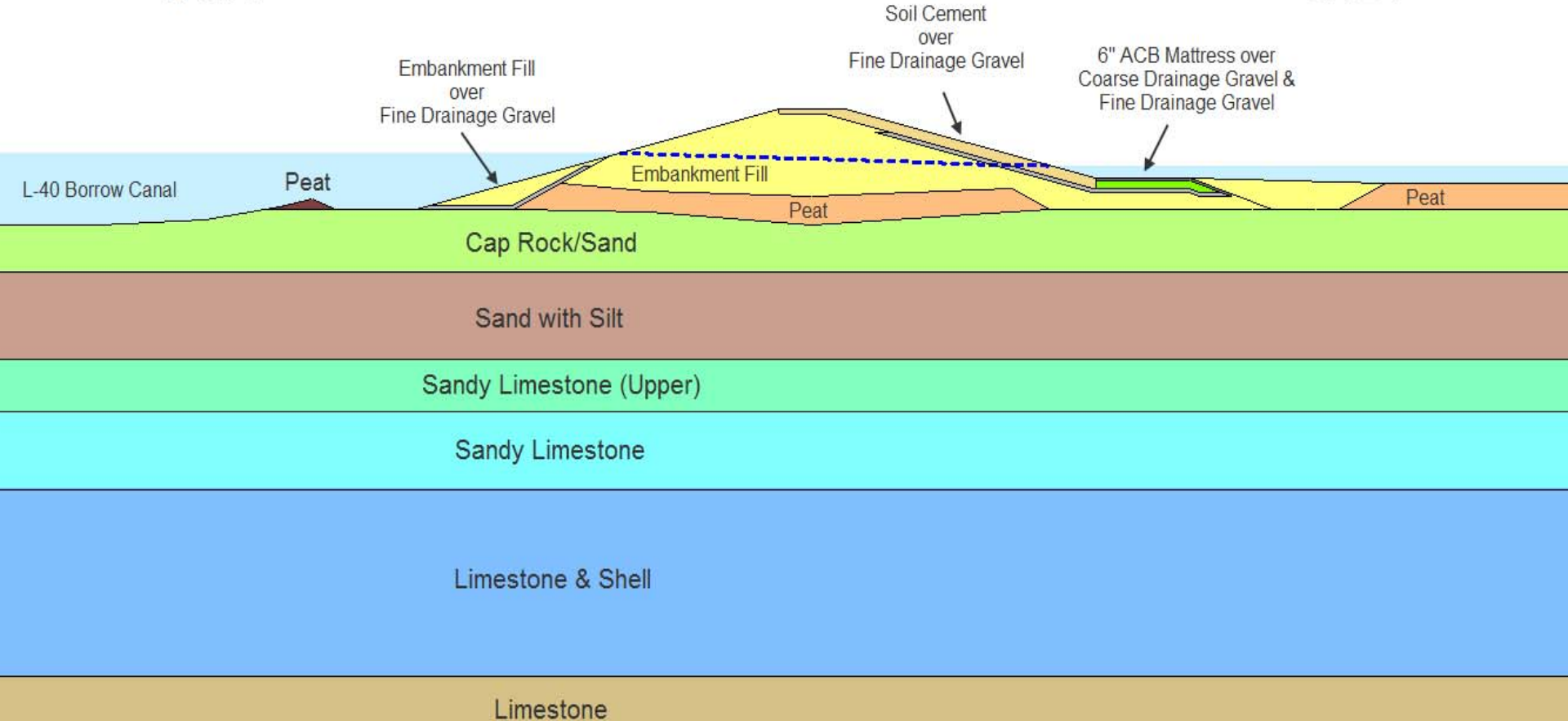
Wildlife
Wetland
Area

D-525N (L-40 Levee Modifications)

D-525 North Embankment

WCA-1

SITE 1



Phase 2, Contract 2

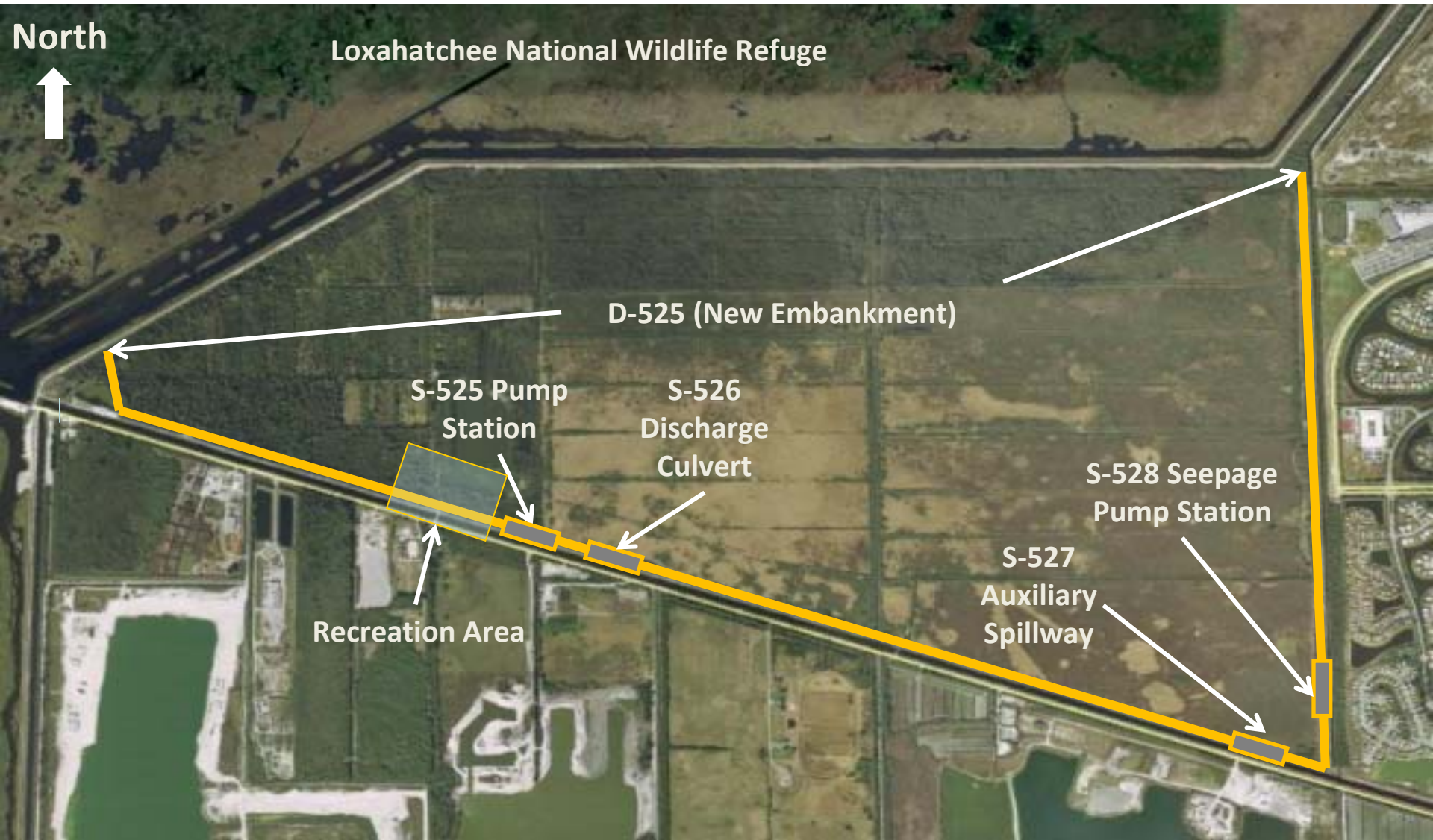
- **Construct the remaining features of the impoundment**
 - **Embankment**
 - **Canals**
 - **Pump Stations**
 - **Structures**
 - **Recreation Features**

- **Projected timeline to construction**
 - **Complete Design - April 2011**
 - **Advertise - July 2011**
 - **Award - September 2011**

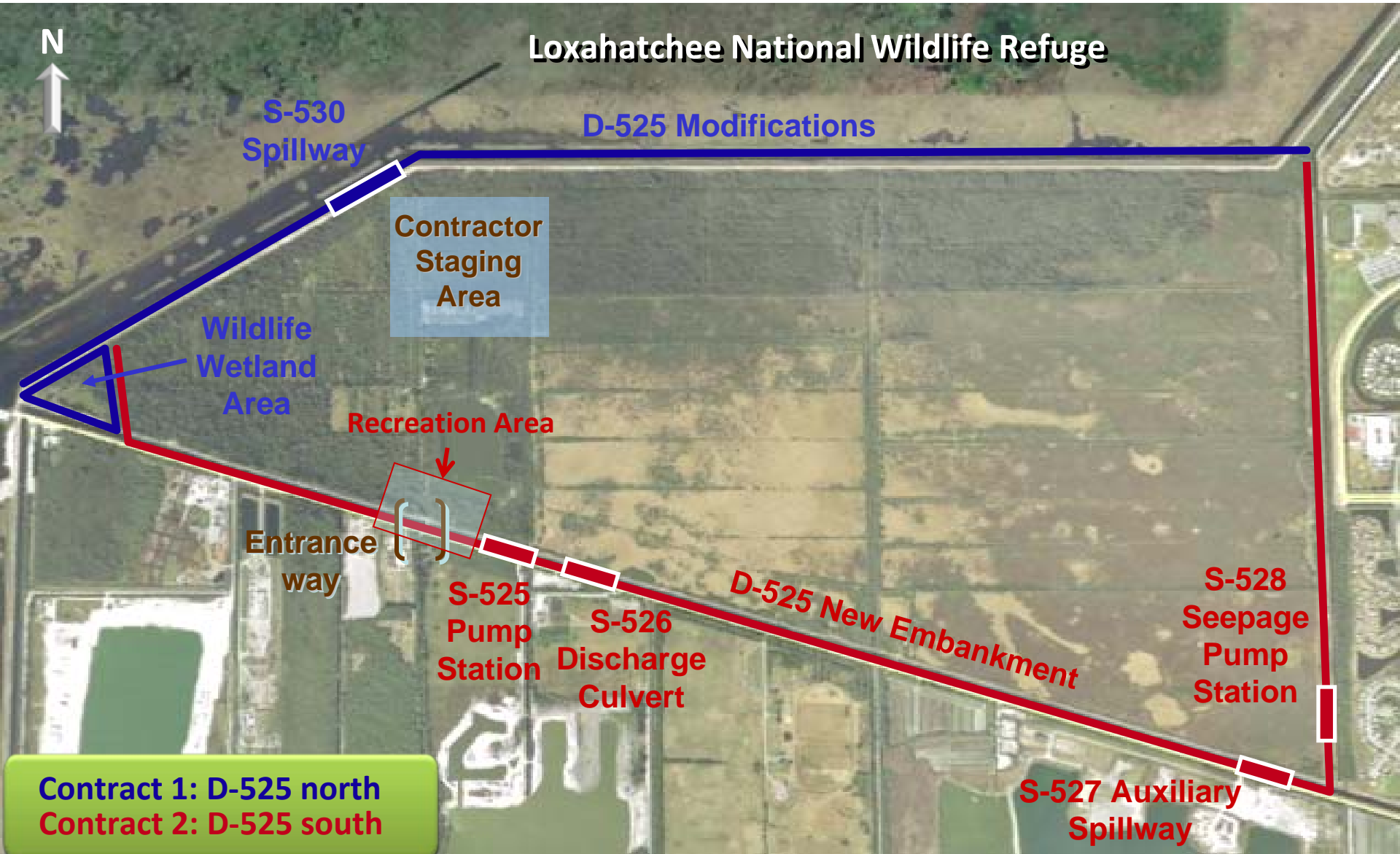
- **Schedule provides overlap with Contract 1; expedites construction completion to see benefits sooner**



Phase 2, Contract 2 Impoundment Features



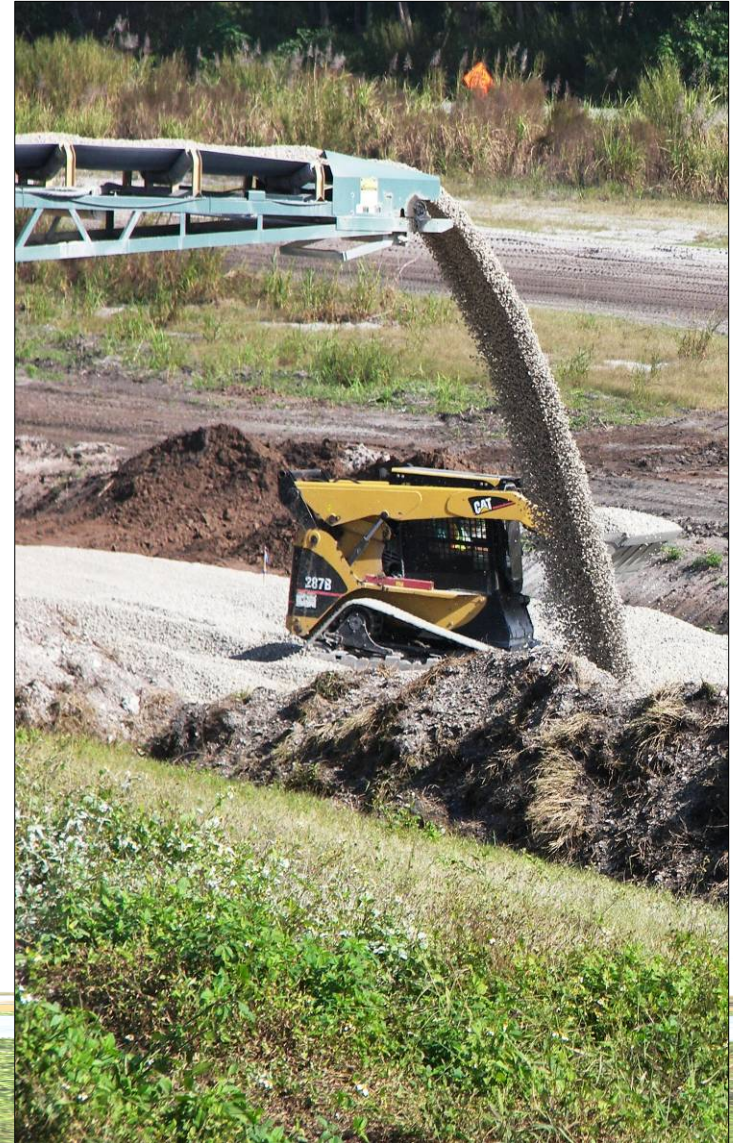
Site 1 Impoundment



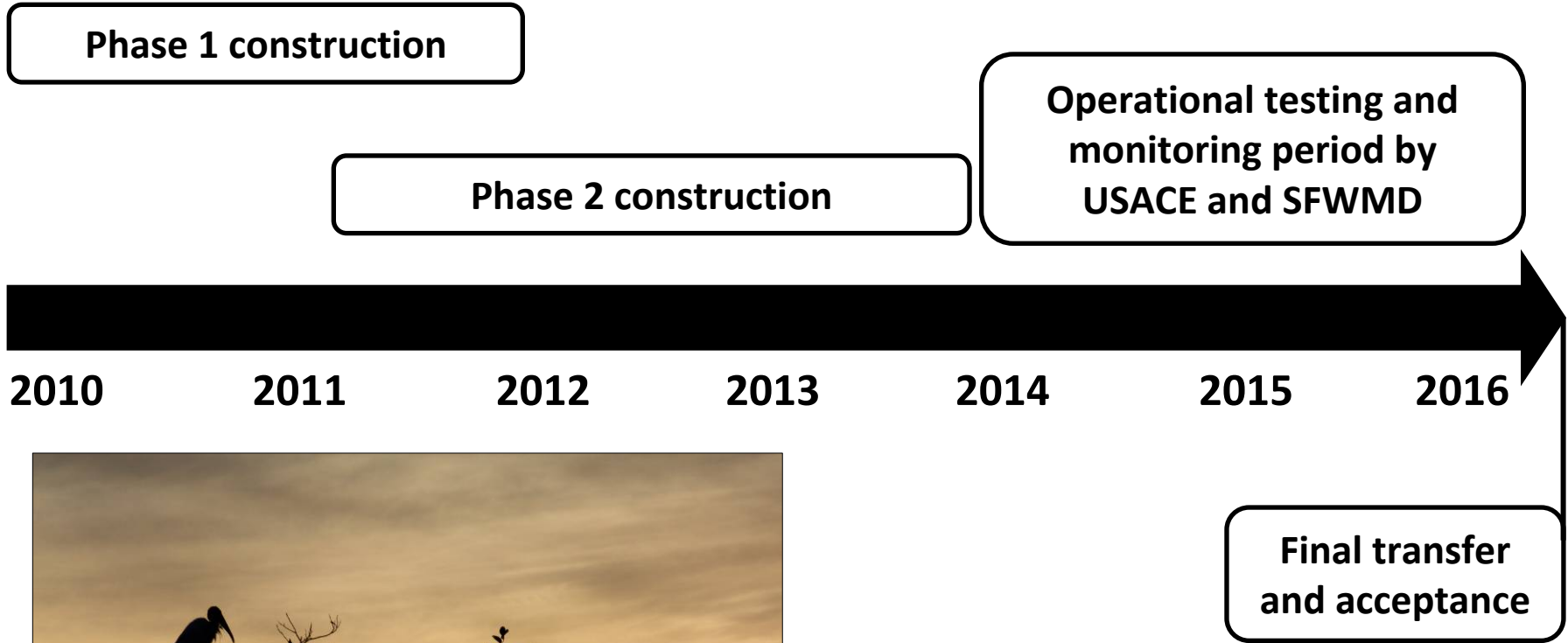
Construction Activities

During construction

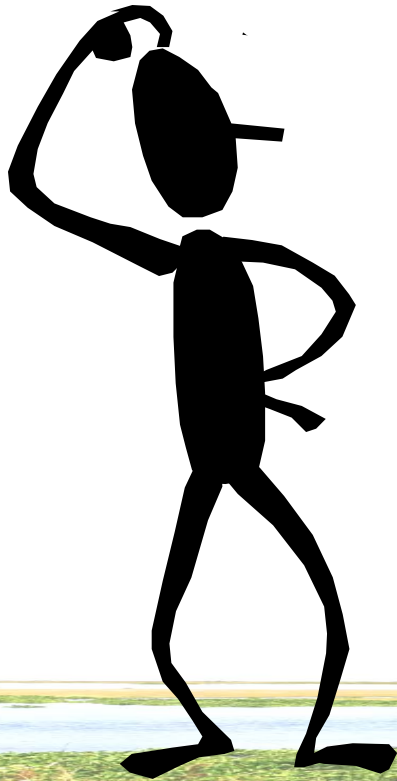
- Minimum impacts to road access expected
- Will likely close L-40 levee recreation access for safety
- No nighttime work (sunrise to sunset only)
- Contractor will have safety, environmental, emergency weather plans in place



Overall Project Timeline



Comments and Questions?



US Army Corps
of Engineers®
Jacksonville District



sfwmd.gov

Thank you for participating!

**Please visit our website at
www.evergladesplan.org**

Project Managers

Jeff Needle

jneedle@sfwmd.gov

561-682-6865



sfwmd.gov

Jason Harrah

jason.s.harrah@usace.army.mil

904-232-1381



**US Army Corps of Engineers
BUILDING STRONG®**