

Taylor Creek/Nubbin Slough Planning Area

**Lake Okeechobee Watershed Project
Alternative Plan Description**

Planning Area Alternative No:

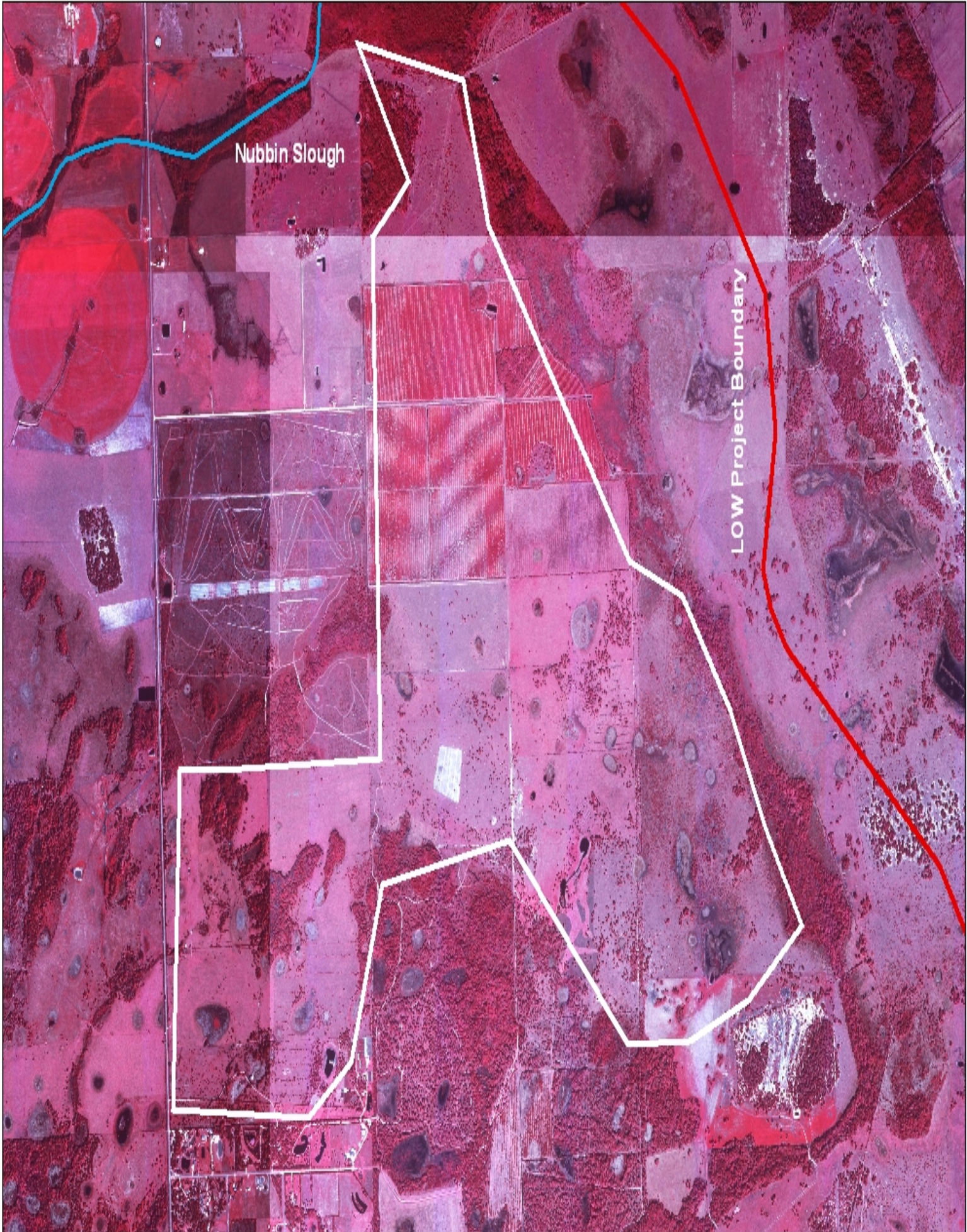
Planning Area ID: Taylor Creek/Nubbin Slough

Location

Wetland Restoration Site	SFWMD Basin(s)	Section/Township/Range
T09	Nubbin Slough	25/37S/36E; 18-20, 29,30,32/37S/37E

Component Summary:

Polygon Parameters	
Total Acres	2,406
Soils Score	0.69
Ecological Value Score	0.89
Contaminants Score	0.93
Economic Value Score	0.72
Summary Score	0.81
Public Lands Connectivity Score	0.00
Ecological Connectivity Score	0.79
SHCA Connectivity Score	1.00
Cultural Resources?	No
Environmental and Economic Equity (EEE)?	Low Density (15%)
Acres of Muck Soils	372
% Muck Soils	15.45%
Acres of Sand (Hydric) Soils	1,806
% Sand (Hydric) Soils	75.05%
Number/Acres of Existing Wetlands	#/321
Quality of Existing Wetlands (Range: Average WRAP Score)	TBD
Wetland Type(s) (FLUCCS Code-Refer to Table D2)	TBD
Acres/% Wetland Loss	50/13.50%
Acres/% Upland Loss	1994/98.01%
Acres of Forested Wetland Wading Bird Habitat (Breeding) on Site	149
Acres of Non-Forested Wetland Wading Bird Habitat (Foraging) on Site	213
Acres of Forested Wetland Wading Bird Habitat (Breeding) within 4 miles	3,899
Acres of Non-Forested Wetland Wading Bird Habitat (Foraging) within 4 miles	4,234
Adjacent Land Uses (% Native/Natural)	30.97%
Adjacent Land Uses (% Rangeland/Pasture)	57.74%
Adjacent Land Uses (% Agriculture)	10.79%
Adjacent Land Uses (% Developed)	0.50%
Adjacent Land Uses (% Public Lands)	0.00%
Number of Real Estate Parcels	9
Number of Parcel Owners	7
SFWMD Land Area Available (Acres)?	0
Total Land Acquisition Area Required	TBD
Estimated Easement Cost of Land (per acre)	\$5,100
Total Easement Cost for Land	\$12,270,600
Acres of Fully Functioning Wetlands on Site	0
Functioning Wetland Habitat Units in 2004	188.08
Functioning Wetland Habitat Units in 2013	187.69
Functioning Wetland Habitat Units w/o Project in 2050	186.92
Functioning Wetland Habitat Units w/ Project in 2050	299.26
Functioning Wetland Habitat Units w/o Project in 2063	186.73
Functioning Wetland Habitat Units w/ Project in 2063	299.26
Restorable Wetland Habitat Units in 2004	171.79
Restorable Wetland Habitat Units in 2013	172.43
Restorable Wetland Habitat Units w/o Project in 2050	172.43
Restorable Wetland Habitat Units w/ Project in 2050	0.00
Restorable Wetland Habitat Units w/o Project in 2063	172.43
Restorable Wetland Habitat Units w/ Project in 2063	0.00
Functioning Upland Habitat Units in 2004	422.40
Functioning Upland Habitat Units in 2013	418.35
Functioning Upland Habitat Units w/o Project in 2050	402.17
Functioning Upland Habitat Units w/ Project in 2050	1,900.27
Functioning Upland Habitat Units w/o Project in 2063	398.13
Functioning Upland Habitat Units w/ Project in 2063	1,900.27
Restorable Upland Habitat Units in 2004	1,865.64
Restorable Upland Habitat Units in 2013	1,679.07
Restorable Upland Habitat Units w/o Project in 2050	932.82
Restorable Upland Habitat Units w/ Project in 2050	0.00
Restorable Upland Habitat Units w/o Project in 2063	931.69
Restorable Upland Habitat Units w/ Project in 2063	0.00
Total Habitat Units w/o Project in 2050	589.09
Total Habitat Units w/ Project in 2050	2,371.96
Total Habitat Units w/o Project in 2063	584.86
Total Habitat Units w/ Project in 2063	2,371.96
Ecological Lift Potential 2050	1,782.87
Ecological Lift Potential 2063	1,787.10



Nubbin Slough

LOW Project Boundary

Potential Restoration Site T09

ATTACHMENT I

Planning Level Restoration Cost Estimates for Top-Ranked Sites

Wetland Restoration Planning Level Cost Estimation

Parcel No: F02

Exotic and Nuisance Species Removal

Wetland No.	Wetland Type	Acreage	Unit Price	Cost
W1 - W6	6150/6300	5.93	\$ 1,500 /ac	\$ 8,895
W6 - W10	6410	1.3	\$ 1,500 /ac	\$ 1,950
W11	6430	0.13	\$ 1,500 /ac	\$ 195
TOTAL		7.36		\$ 11,040

10% of wetland acreage
20% of wetland acreage
10% of wetland acreage

Fill Ditches	Size	Length (ft)	Unit Price	Cost
	small	0	\$ 1.50 /ft	-
	medium	16,200	\$ 5.50 /ft	\$ 89,100
	large	4,300	\$ 18.50 /ft	\$ 79,550
TOTAL				\$ 168,650

95,100 Total length
16,200 Total length
4,300 Total length

Wetland Buffer Restoration

Herbicide	Unit	Quantity	Unit Price	Cost
	ac	578.4	\$ 150 /ac	\$ 86,760
Seed and Mulch	ac	480.9	\$ 400 /ac	\$ 192,368
TOTAL				\$ 279,128

Real Estate Costs

	ac	645.7	\$ 2,500 /ac	\$ 1,614,250
TOTAL				\$ 2,320,830
Total acreage		645.7		
Cost per acre		\$ 3,594		
Ecological lift potential		382.2		
Cost per unit lift		\$ 5,222		

SUBTOTAL \$ 458,818
Mobilization \$ 45,882
SUBTOTAL \$ 504,700
Contingency \$ 201,880
TOTAL \$ 706,580

Wetland Restoration Planning Level Cost Estimation					
Parcel No: F03					
Exotic and Nuisance Species Removal					
Wetland No.	Wetland Type	Acres	Unit Price	Cost	Comments
W1 - W33	6100	30.72	\$ 1,500 /ac	\$ 46,080	10% of wetland acreage
W34 - W108	6410	85.66	\$ 1,500 /ac	\$ 128,490	20% of wetland acreage
W109 - W115	6430	2.96	\$ 1,500 /ac	\$ 4,440	10% of wetland acreage
TOTAL		119.34		\$ 179,010	
Wetland Buffer Restoration					
Herbicide	ac	11,854	\$ 150 /ac	\$ 1,778,100	
Seed and Mulch	ac	940	\$ 400 /ac	\$ 376,000	
		TOTAL		\$ 2,154,100	
		SUBTOTAL		\$ 2,333,110	
		Mobilization		\$ 233,311	
		SUBTOTAL		\$ 2,566,421	
		Contingency		\$ 1,026,568	
		TOTAL		\$ 3,592,989	
Real Estate Costs					
	ac	14,203.9	\$ 3,000 / ac	\$ 42,611,700	
		TOTAL		\$ 46,204,689	
Total acreage		14,203.9			
Cost per acre		\$ 3,253			
Ecological lift potential		12,866.9			
Cost per unit lift		\$ 3,600			

Wetland Restoration Planning Level Cost Estimation						
Parcel No: F06						
Exotic and Nuisance Species Removal						
Wetland No.	Wetland Type	Acreeage	Unit Price	Cost		
W1 - W6	6172	2.23	\$ 1,500 /ac	\$ 3,339		10% of wetland acreage
W7 - W32	6410	45.30	\$ 1,500 /ac	\$ 67,950		20% of wetland acreage
W33 -W43	6430	5.15	\$ 1,500 /ac	\$ 7,730		10% of wetland acreage
TOTAL		52.68		\$ 79,019		
Fill Ditches	Size	Length (ft)	Unit Price	Cost		
	small	15,000	\$ 1.50 /ft	\$ 22,500		100,000 Total length
	medium	70,000	\$ 5.50 /ft	\$ 385,000		88,000 Total length
	large	0	\$ 18.50 /ft	\$ -		13,000 Total length
		TOTAL		\$ 407,500		
Other Site Work	Size	Length (ft)	Unit Price	Cost		
Install berm	medium	3,000	\$ 5.50 /ft	\$ 16,500		Along roadway
Ditch Blocks	Size	Quantity	Unit Price	Cost		
	medium	0	\$ 200 ea	\$ -		
	large	5	\$ 756 ea	\$ 3,780		
		TOTAL		\$ 20,280		
Wetland Buffer Restoration	Unit	Quantity	Unit Price	Cost		
Herbicide	ac	2,094.7	\$ 150 /ac	\$ 314,205		
Seed and Mulch	ac	908.7	\$ 400 /ac	\$ 363,464		
		TOTAL		\$ 677,669		
		SUBTOTAL		\$ 1,184,468		
		Mobilization		\$ 118,447		
		SUBTOTAL		\$ 1,302,914		
		Contingency		\$ 521,166		
		TOTAL		\$ 1,824,080		
Real Estate Costs	ac	2,395.1	\$ 2,500 / ac	\$ 5,987,775		
		TOTAL		\$ 7,811,855		

Total acreage	2395.1
Cost per acre	\$ 3,262
Ecological lift potential	2,060.0
Cost per unit lift	\$ 3,792

Wetland Restoration Planning Level Cost Estimation

Parcel No: F08						
Exotic and Nuisance Species Removal						
Wetland No.	Wetland Type	Acres	Unit Price	Cost		
W1 - W6	6100/6300	29.63	\$ 1,500 /ac	\$ 44,445	10% of wetland acreage	
W6 - W16	6410	10.7	\$ 1,500 /ac	\$ 16,050	20% of wetland acreage	
W17 -W21	6430	4.59	\$ 1,500 /ac	\$ 6,885	10% of wetland acreage	
TOTAL		44.92		\$ 67,380		
Fill Ditches	Size	Length (ft)	Unit Price	Cost		
	small	63,300	\$ 1.50 /ft	\$ 94,950	63,300 Total length	
	medium	4,000	\$ 5.50 /ft	\$ 22,000	4,000 Total length	
	large	-	\$ 18.50 /ft	\$ -	0 Total length	
			TOTAL	\$ 116,950		
Wetland Buffer Restoration	Unit	Unit Price	Cost			
Herbicide	ac	1,710.6	\$ 150 /ac	\$ 256,590		
Seed and Mulch	ac	572.1	\$ 400 /ac	\$ 228,836		
			TOTAL	\$ 485,426		

SUBTOTAL	\$ 669,756
Mobilization	\$ 66,976
SUBTOTAL	\$ 736,732
Contingency	\$ 294,693
TOTAL	\$1,031,424

Real Estate Costs	ac	2,106.4	\$ 2,500 / ac	\$5,266,000
Total acreage		2,106.4		
Cost per acre	\$	2,990		
Ecological lift potential		1,476.4		
Cost per unit lift	\$	4,265		
			TOTAL	\$6,297,424

Wetland Restoration Planning Level Cost Estimation

Parcel No: F10

Exotic and Nuisance Species Removal

Wetland No.	Wetland Type	Acres	Unit Price	Cost
W1 - W11	6100/6300	9.34	\$ 1,500 /ac	\$ 14,010
W11 - W21	6410	10.60	\$ 1,500 /ac	\$ 15,900
W22 - W28	6430	1.94	\$ 1,500 /ac	\$ 2,910
TOTAL		21.88		\$ 32,820

10% of wetland acreage
20% of wetland acreage
10% of wetland acreage

Fill Ditches

Size	Length (ft)	Unit Price	Cost
small	88,700	\$ 1.50 /ft	\$ 133,050
medium	16,000	\$ 5.50 /ft	\$ 88,000
large	1,500	\$ 18.50 /ft	\$ 27,750
TOTAL			\$ 248,800

88,700 Total length
16,000 Total length
1,500 Total length

Other Site Work

Size	Length (ft)	Unit Price	Cost
medium	2,600	\$ 5.50 /ft	\$ 14,300
TOTAL			\$ 14,300

Along roadway

Wetland Buffer Restoration

Unit	Quantity	Unit Price	Cost
ac	1,443.7	\$ 150 /ac	\$ 216,555
ac	167.0	\$ 400 /ac	\$ 66,792
TOTAL			\$ 283,347

SUBTOTAL	\$ 579,267
Mobilization	\$ 57,927
SUBTOTAL	\$ 637,194
Contingency	\$ 254,877
TOTAL	\$ 892,071

Real Estate Costs

ac	1,609.5	\$ 2,500 / ac	\$ 4,023,750
TOTAL			\$ 4,915,821

Total acreage	1,609.5
Cost per acre	\$ 3,054
Ecological lift potential	1,278.0
Cost per unit lift	\$ 3,846

Wetland Restoration Planning Level Cost Estimation

Parcel No: F11

Exotic and Nuisance Species Removal

Wetland No.	Wetland		Acreege	Unit Price	Cost	
	Type					
W1 - W17	6100/6300		13.55	\$ 1,500 /ac	\$ 20,325	10% of wetland acreage
W18 - W47	6410		41.60	\$ 1,500 /ac	\$ 62,400	20% of wetland acreage
W47 -W49	6430		0.38	\$ 1,500 /ac	\$ 570	10% of wetland acreage
TOTAL			55.53		\$ 83,295	

Wetland Buffer

Restoration

Herbicide

Seed and Mulch

Unit	Quantity	Unit Price	Cost
ac	2,573.5	\$ 150 /ac	\$ 386,025
ac	1,153.2	\$ 400 /ac	\$ 461,280

TOTAL \$ 847,305

SUBTOTAL \$ 930,600
 Mobilization \$ 93,060
 SUBTOTAL \$ 1,023,660
 Contingency \$ 409,464
 TOTAL \$ 1,433,124

Real Estate Costs

ac	2,920.8	\$ 3,000 / ac	\$ 8,762,400
TOTAL			\$10,195,524

Total acreage	2,920.8
Cost per acre	\$ 3,491
Ecological lift potential	1,525.5
Cost per unit lift	\$ 6,683

Wetland Restoration Planning Level Cost Estimation																																									
Parcel No: F14																																									
Exotic and Nuisance Species Removal																																									
Wetland No.	Wetland Type	Acreeage	Unit Price	Cost																																					
W1 - W10	6200/6300	5.10	\$ 1,500 /ac	\$ 7,650	10% of wetland acreage																																				
W10 - W15	6410	4.40	\$ 1,500 /ac	\$ 6,600	20% of wetland acreage																																				
TOTAL		9.50		\$ 14,250																																					
Fill Ditches	Size	Length (ft)	Unit Price	Cost																																					
	small	20,000	\$ 1.50 /ft	\$ 30,000	20,000 total length																																				
	medium	0	\$ 5.50 /ft	\$ -																																					
	large	0	\$ 18.50 /ft	\$ -																																					
				TOTAL	\$	30,000																																			
Wetland Buffer Restoration	Unit	Unit Price																																							
Herbicide	ac	\$ 372.9	\$ 150 /ac	\$ 55,935																																					
Seed and Mulch	ac	157.4	\$ 400 /ac	\$ 62,964																																					
				TOTAL	\$	118,899																																			
<table border="0" style="width: 100%;"> <tr> <td style="width: 50%;">SUBTOTAL</td> <td style="width: 10%;">\$</td> <td style="width: 10%;">163,149</td> <td colspan="4"></td> </tr> <tr> <td>Mobilization</td> <td>\$</td> <td>16,315</td> <td colspan="4"></td> </tr> <tr> <td>SUBTOTAL</td> <td>\$</td> <td>179,464</td> <td colspan="4"></td> </tr> <tr> <td>Contingency</td> <td>\$</td> <td>71,786</td> <td colspan="4"></td> </tr> <tr> <td>TOTAL</td> <td>\$</td> <td>251,249</td> <td colspan="4"></td> </tr> </table>							SUBTOTAL	\$	163,149					Mobilization	\$	16,315					SUBTOTAL	\$	179,464					Contingency	\$	71,786					TOTAL	\$	251,249				
SUBTOTAL	\$	163,149																																							
Mobilization	\$	16,315																																							
SUBTOTAL	\$	179,464																																							
Contingency	\$	71,786																																							
TOTAL	\$	251,249																																							
Real Estate Costs	ac	445.9	\$ 3,000 / ac	\$ 1,337,700																																					
		TOTAL		\$ 1,588,949																																					
Total acreage		445.9																																							
Cost per acre	\$	3,563																																							
Ecological lift potential		323.8																																							
Cost per unit lift	\$	4,907																																							

Wetland Restoration Planning Level Cost Estimation					
Parcel No: IP01					
Exotic and Nuisance Species Removal					
Wetland No.	Wetland Type	Acres	Unit Price		
W1 - W2	6150	0.67	\$ 1,500 /ac	\$ 1,005	10% of wetland acreage
W3 - W34	6410	14.8	\$ 1,500 /ac	\$ 22,200	20% of wetland acreage
W35 -W49	6430	8.03	\$ 1,500 /ac	\$ 12,045	10% of wetland acreage
TOTAL		23.5		\$ 35,250	
Fill Ditches	Size	Length (ft)	Unit Price	Cost	
	small	6,350	\$ 1.50 /ft	\$ 9,525	87,900 Total length
	medium	32,850	\$ 5.50 /ft	\$ 180,675	127,300 Total length
	large	22,800	\$ 18.50 /ft	\$ 421,800	24,800 Total length
		TOTAL		\$ 612,000	
Other Site Work	Size	Length (ft)	Unit Price	Cost	
Install berm	medium	18,000	\$ 5.50 /ft	\$ 99,000	Along roadway
		TOTAL		\$ 99,000	
Wetland Buffer Restoration	Size	Unit Price	Cost		
Herbicide	ac	1896.4	150 /ac	\$ 284,460	
Seed and Mulch	ac	206.9	400 /ac	\$ 82,760	
		TOTAL		\$ 367,220	
Real Estate Costs	ac	2,057.7	\$3,500 / ac	\$ 7,201,950	
		TOTAL		\$ 8,916,694	

Total acreage	2,057.7
Cost per acre	\$ 4,333
Ecological lift potential	1,863.5
Cost per unit lift	\$ 4,785

Wetland Restoration Planning Level Cost Estimation

Parcel No: IP03

Exotic and Nuisance Species Removal

Wetland No.	Wetland Type	Acreage	Unit Price	Cost
W1 - W11	6172	3.66	\$ 1,500 /ac	\$ 5,490
W12 - W114	6410	131.40	\$ 1,500 /ac	\$ 197,100
W115 - W173	6430	105.30	\$ 1,500 /ac	\$ 157,950
TOTAL				\$ 360,540

Fill Ditches	Size	Length (ft)	Unit Price	Cost
	small	6,700	\$ 1.50 /ft	\$ 10,050
	medium	126,400	\$ 5.50 /ft	\$ 695,200
	large	181,700	\$ 18.50 /ft	\$ 3,361,450
TOTAL				\$ 4,066,700

Other Site Work	Size	Length (ft)	Unit Price	Cost
Install berm	medium	24,000	\$ 5.50 /ft	\$ 132,000

Ditch Blocks	Number	Quantity	Cost
	52	200 ea	\$ 10,400
	0	756 ea	\$ -
TOTAL			\$ 142,400

Wetland Buffer Restoration	Unit	Size	Unit Price	Cost
Herbicide	ac	4,963.30	\$ 150 /ac	\$ 744,495
Seed and Mulch	ac	104.34	\$ 400 /ac	\$ 41,736
TOTAL				\$ 786,231

Wetland Restoration Planning Level Cost Estimation

Parcel No: IP04

Exotic and Nuisance Species Removal

Wetland No.	Wetland Type	Acreeage	Unit Price	Cost	
W1 - W6	6172	2.46	\$ 1,500 /ac	\$ 3,690	10% of wetland acreage
W7 - W26	6410	11.2	\$ 1,500 /ac	\$ 16,800	20% of wetland acreage
W27 -W31	6430	2.88	\$ 1,500 /ac	\$ 4,320	10% of wetland acreage
TOTAL		16.54		\$ 24,810	

Fill Ditches	Size	Length (ft)	Unit Price	Cost	
	Small	101,700	\$ 1.50 /ft	\$ 152,550	310,900 Total length
	medium	99,200	\$ 5.50 /ft	\$ 545,600	121,600 Total length
	Large	181,200	\$ 18.50 /ft	\$ 3,352,200	234,400 Total length
		TOTAL		\$ 4,050,350	

Other Site Work	Size	Length (ft)	Unit Price	Cost	
Install berm	medium	5,700	\$ 5.50 /ft	\$ 31,350	

Ditch Blocks	Size	Number	Unit Price	Cost	
	Small	72	\$ 60 ea	\$ 4,320	
	medium	9	\$ 200 ea	\$ 1,800	
	Large	6	\$ 756 ea	\$ 4,536	
		TOTAL		\$ 42,006	

Wetland Buffer Restoration	Unit	Size	Unit Price	Cost	
Herbicide	Ac	6,286.10	150 /ac	\$ 942,915	
Seed and Mulch	Ac	206.83	400 /ac	\$ 82,732	
		TOTAL		\$ 1,025,647	

Wetland Restoration Planning Level Cost Estimation

Parcel No: IP11

Exotic and Nuisance Species Removal

Wetland No.	Wetland Type	Acres	Unit Price	Cost	Comments
W1 - W2	6150	0.10	\$ 1,500 /ac	\$ 152	10% of wetland acreage
W3 - W13	6410	9.00	\$ 1,500 /ac	\$ 13,500	20% of wetland acreage
W14	6430	0.78	\$ 1,500 /ac	\$ 1,170	10% of wetland acreage
TOTAL		9.88		\$ 14,822	
Fill Ditches	Size	Length (ft)	Unit Price	Cost	
	medium	34,700	\$ 5.50 /ft	\$ 190,850	Total length
	large	110,750	\$ 18.50 /ft	\$ 2,048,875	Total length
TOTAL				\$ 2,284,200	
Other Site Work	Size	Length (ft)	Unit Price	Cost	
Install berm	medium	8,500	5.50 /ft	\$ 46,750	Along residential/roadway
Ditch Blocks	Size	Quantity	Unit Price	Cost	
	medium	0	\$ 200 ea	\$ -	
	large	21	\$ 756 ea	\$ 15,876	
TOTAL				\$ 62,626	
Wetland Buffer Restoration	Unit	Size	Unit Price	Cost	
Herbicide	ac	3,228.4	\$ 150 /ac	\$ 484,260	
Seed and Mulch	ac	169.0	\$ 400 /ac	\$ 67,608	
TOTAL				\$ 551,868	

Wetland Restoration Planning Level Cost Estimation

Parcel No: K01

Exotic and Nuisance Species Removal

Wetland No.	Wetland Type	Acreage	Unit Price	Cost	
OW1 - OW 3	5310	81.54	\$ 1,500 /ac	\$ 122,315	10% of wetland acreage
W1 - W2	6410	0.60	\$ 1,500 /ac	\$ 900	20% of wetland acreage
TOTAL		82.143		\$ 123,215	

Wetland Buffer Restoration Herbicide

Unit	Quantity	Unit Price	Cost
ac	23.27	\$ 150 /ac	\$ 3,491
TOTAL			\$ 3,491

SUBTOTAL	\$ 126,705
Mobilization	\$ 12,671
SUBTOTAL	\$ 139,376
Contingency	\$ 55,750
TOTAL	\$ 195,126

Real Estate Costs

ac	841.7	\$ 4,000 /ac	\$ 3,366,680
TOTAL			\$ 3,561,806

Total acreage	841.7
Cost per acre	\$ 4,232
Ecological lift potential	18.7
Cost per unit lift	\$ 190,471

Wetland Restoration Planning Level Cost Estimation

Parcel No: K05

Exotic and Nuisance Species Removal

Wetland No.	Wetland Type	Acreage	Unit Price	Cost
W1 - W2	6150	1.57	\$ 1,500 /ac	\$ 2,355
W3 - W8	6410	5.32	\$ 1,500 /ac	\$ 7,980
TOTAL		6.89		\$ 10,335

Fill Ditches	Size	Length (ft)	Unit Price	Cost
	small	1,500	\$ 1.50 /ft	\$ 2,250
	medium	24,500	\$ 5.50 /ft	\$ 134,750
	large	2,000	\$ 18.50 /ft	\$ 37,000
		TOTAL		\$ 174,000

Other Site Work	Size	Length (ft)	Unit Price	Cost
Install berm	medium	4,500	\$ 5.50 /ft	\$ 24,750
		TOTAL		\$ 24,750

Wetland Buffer Restoration	Unit	Quantity	Unit Price	Cost
Herbicide	ac	578.3	\$ 150 /ac	\$ 86,738
Seed and Mulch	ac	467.11	\$ 400 /ac	\$ 186,844
		TOTAL		\$ 273,582

		SUBTOTAL	\$ 482,667
		Mobilization	\$ 48,267
		SUBTOTAL	\$ 530,933
		Contingency	\$ 212,373
		TOTAL	\$ 743,306

Real Estate Costs	ac	Unit Price	Cost
	703.9	\$ 4,000 /ac	\$ 2,815,640
		TOTAL	\$ 3,584,356

Total acreage	703.9
Cost per acre	\$ 5,092
Ecological lift potential	538.4
Cost per unit lift	\$ 6,657

1,500 Total length
24,500 Total length
2,000 Total length

Along roadway

Wetland Restoration Planning Level Cost Estimation

Parcel No: K19

Exotic and Nuisance Species Removal

Wetland No.	Wetland Type	Acreage	Unit Price	Cost	
W1 - W18	6150	17.19	\$ 1,500 /ac	\$ 25,784	10% of wetland acreage
W19 - W81	6410	160.20	\$ 1,500 /ac	\$ 240,300	20% of wetland acreage
W81 -W90	6430	9.44	\$ 1,500 /ac	\$ 14,157	10% of wetland acreage
TOTAL		186.83		\$ 280,241	
Fill Ditches	Size	Length (ft)	Unit Price	Cost	
	small	116,500	\$ 1.50 /ft	\$ 174,750	336,000
	medium	105,000	\$ 5.50 /ft	\$ 577,500	105,000
	large	72,000	\$ 18.50 /ft	\$ 1,332,000	72,000
		TOTAL		\$ 2,084,250	
Other Site Work	Size	Length (ft)	Unit Price	Cost	
Install berm	medium	16,000	\$ 5.50 /ft	\$ 88,000	Along roadway
		TOTAL		\$ 88,000	
Wetland Buffer Restoration	Unit	Quantity	Unit Price	Cost	
Herbicide	ac	9,508.1	\$ 150 /ac	\$ 1,426,211	
Seed and Mulch	ac	665.1	\$ 400 /ac	\$ 266,048	
		TOTAL		\$ 1,692,259	
		SUBTOTAL		\$ 4,144,749	
		Mobilization		\$ 414,475	
		SUBTOTAL		\$ 4,559,224	
		Contingency		\$ 1,823,690	
		TOTAL		\$ 6,382,913	
Real Estate Costs	ac	10,575.4	\$ 4,000/ac	\$ 42,301,680	
		TOTAL		\$ 48,684,593	
Total acreage		10,575.4			
Cost per acre	\$	4,604			
Ecological lift potential		8,823.3			
Cost per unit lift	\$	5,518			

Wetland Restoration Planning Level Cost Estimation

Parcel No: K24

Exotic and Nuisance Species Removal

Wetland No.	Wetland Type	Acreeage	Unit Price	Cost	Comments
W1 - W18	6150	77.46	\$ 1,500 /ac	\$ 116,196	10% of wetland acreage
W19 - W31	6410	25.60	\$ 1,500 /ac	\$ 38,400	20% of wetland acreage
W32	6430	4.06	\$ 1,500 /ac	\$ 6,086	10% of wetland acreage
TOTAL		107.121		\$ 160,682	
Fill Ditches	Size	Length (ft)	Unit Price	Cost	
	small	126,000	\$ 1.50 /ft	\$ 189,000	126,000 Total length
	medium	73,700	\$ 5.50 /ft	\$ 405,350	73,700 Total length
	large	42,500	\$ 18.50 /ft	\$ 786,250	42,500 Total length
		TOTAL		\$ 1,380,600	
Other Site Work	Size	Length (ft)	Unit Price	Cost	
Remove Berm	medium	20,400	\$ 5.50 /ft	\$ 112,200	
Ditch Blocks	Size	Quantity	Unit Price	Cost	
	medium	0	\$ 200 ea	\$ -	
	large	3	\$ 756 ea	\$ 2,268	
		TOTAL		\$ 114,468	
Wetland Buffer Restoration	Unit	Quantity	Unit Price	Cost	
Herbicide	ac	3,253.4	\$ 150 /ac	\$ 488,010	
Seed and Mulch	ac	1,284.4	\$ 400 /ac	\$ 513,760	
		TOTAL		\$ 1,001,770	
		SUBTOTAL		\$ 2,657,520	
		Mobilization		\$ 265,752	
		SUBTOTAL		\$ 2,923,271	
		Contingency		\$ 1,169,309	
		TOTAL		\$ 4,092,580	

Development of Alternative Plans

Real Estate Costs	ac	4,196.8	\$ 4,000 /ac	\$ 16,787,320
			TOTAL	\$ 20,879,900
Total acreage	4,196.8			
Cost per acre	\$ 4,975			
Ecological lift potential	2,838.7			
Cost per unit lift	\$ 7,355			

Wetland Restoration Planning Level Cost Estimation

Parcel No: K25

Exotic and Nuisance Species Removal

Wetland No.	Wetland Type	Acres	Unit Price	Cost	
W1 - W19	6150	6.21	\$ 1,500 /ac	\$ 9,312	10% of wetland acreage
W20 - W43	6410	40.60	\$ 1,500 /ac	\$ 60,900	20% of wetland acreage
W44 - W46	6430	19.67	\$ 1,500 /ac	\$ 29,501	10% of wetland acreage
TOTAL		66.48		\$ 99,713	

Fill Ditches

Size	Length (ft)	Unit Price	Cost	
small	61,500	\$ 1.50 /ft	\$ 92,250	252,500 Total length
medium	92,000	\$ 5.50 /ft	\$ 506,000	72,000 Total length
		TOTAL	\$ 598,250	

Other Site Work

Size	Length (ft)	Unit Price	Cost
medium	18,500.0	\$ 9 /ft	\$ 166,500
		TOTAL	\$ 166,500

Wetland Buffer Restoration

Unit	Quantity	Unit Price	Cost
ac	4,253.1	\$ 150 /ac	\$ 637,965
ac	1,621.0	\$ 400 /ac	\$ 648,400
		TOTAL	\$ 1,286,365

Herbicide

		SUBTOTAL	\$ 2,150,828
--	--	-----------------	---------------------

Seed and Mulch

		SUBTOTAL	\$ 215,083
		SUBTOTAL	\$ 2,365,910
		Contingency	\$ 946,364
		TOTAL	\$ 3,312,274

Real Estate Costs

ac	4,253.1	\$ 4,000 /ac	\$ 17,012,240
----	---------	--------------	---------------

		TOTAL	\$ 20,324,514
Total acreage		4,253.1	
Cost per acre		\$ 4,779	
Ecological lift potential		3,242.4	
Cost per unit lift		\$ 6,268	

Wetland Restoration Planning Level Cost Estimation

Parcel No: LI01

Exotic and Nuisance Species Removal

Wetland No.	Wetland Type	Acreage	Unit Price	Cost	
W1 - W14	6100	90.23	\$ 1,500 /ac	\$ 135,345	10% of wetland acreage
W10 -W13	6430	0.711	\$ 1,500 /ac	\$ 1,067	10% of wetland acreage
TOTAL		90.94		\$ 136,412	

Wetland Buffer Restoration	Unit	Quantity	Unit Price	Cost
Herbicide	ac	116.6	\$ 150 /ac	\$ 17,492
Seed and Mulch	ac	73.3	\$ 400 /ac	\$ 29,304
TOTAL				\$ 46,796

SUBTOTAL	\$ 183,207
Mobilization	\$ 18,321
SUBTOTAL	\$ 201,528
Contingency	\$ 80,611
TOTAL	\$ 282,139

Real Estate Costs	ac	1,085.5	\$ 3,000 /ac	\$ 3,256,530
TOTAL				\$ 3,538,669

Total acreage	1,085.5
Cost per acre	\$ 3,260
Ecological lift potential	184.9
Cost per unit lift	\$ 19,138

Wetland Restoration Planning Level Cost Estimation						
Parcel No: LI03						
Exotic and Nuisance Species Removal						
Wetland No.	Wetland Type	Acreeage	Unit Price	Cost	Comments	
W1 - W32	6100-6300	23.59	\$ 1,500 /ac	\$ 35,381	10% of wetland acreage	
W33 - W54	6410	13.40	\$ 1,500 /ac	\$ 20,100	20% of wetland acreage	
W55 -W60	6430	15.22	\$ 1,500 /ac	\$ 22,823	10% of wetland acreage	
TOTAL		52.202		\$ 78,303		
Fill Ditches	Size	Length (ft)	Unit Price	Cost		
	small	29,700	\$ 1.50 /ft	\$ 44,550	29,700 Total length	
	medium	50,100	\$ 5.50 /ft	\$ 275,550	53,100 Total length	
	large	20,200	\$ 18.50 /ft	\$ 373,700	25,800 Total length	
TOTAL				\$ 693,800		
Other Site Work	Size	Length (ft)	Unit Price	Cost		
Install berm	medium	2,000	\$ 5.50 /ft	\$ 11,000	along roadway/resident	
TOTAL				\$ 11,000		
Wetland Buffer Restoration	Unit	Quantity	Unit Price	Cost		
Herbicide	ac	2,133.3	\$ 150 /ac	\$ 319,988		
Seed and Mulch	ac	707.6	\$ 400 /ac	\$ 283,040		
TOTAL				\$ 603,028		
SUBTOTAL				\$ 1,386,131		
Mobilization				\$ 138,613		
SUBTOTAL				\$ 1,524,744		
Contingency				\$ 609,897		
TOTAL				\$ 2,134,641		
Real Estate Costs	ac	2,589.2	\$ 3,000 /ac	\$ 7,767,450		
TOTAL				\$ 9,902,091		
Total acreage		2,589.2				
Cost per acre	\$	3,824				
Ecological lift potential		2,025.4				
Cost per unit lift	\$	4,889				

Wetland Restoration Planning Level Cost Estimation

Parcel No: LI05

Exotic and Nuisance Species Removal

Wetland No.	Wetland Type	Acres	Unit Price	Cost	
W1 - W17	6150	22.49	\$ 1,500 /ac	\$ 33,729	10% of wetland acreage
W18 - W22	6410	12.20	\$ 1,500 /ac	\$ 18,300	20% of wetland acreage
W23 - W25	6430	6.69	\$ 1,500 /ac	\$ 10,038	10% of wetland acreage
Fill Ditches	Size	Length (ft)	Unit Price	Cost	
	small	18,000	\$ 1.50 /ft	\$ 27,000	48,500 Total length
	medium	28,000	\$ 5.50 /ft	\$ 154,000	28,000 Total length
	large	8,000	\$ 18.50 /ft	\$ 148,000	8,000 Total length
			TOTAL	\$ 329,000	

Other Site Work	Size	Length (ft)	Unit Price	Cost
Install berm	medium	4,000	\$ 5.50 /ft	\$ 22,000
Remove road	lf	3,600	\$ 9 /ft	\$ 32,400
Ditch Blocks	Size	Quantity	Unit Price	Cost
	medium	28	\$ 200 ea	\$ 5,600
	large	0	\$ 756 ea	\$ -
			TOTAL	\$ 60,000

Herbicide	ac	2,378.8	\$ 150 /ac	\$ 356,820	
Regrade Upland	ac	13.2	\$ 15,000 /ac	\$ 198,000	citrus w/i wetland buffer
Seed and Mulch	ac	1,322.5	\$ 400 /ac	\$ 528,988	
			TOTAL	\$ 1,083,808	

			SUBTOTAL	\$ 1,534,875	
			Mobilization	\$ 153,488	
			SUBTOTAL	\$ 1,688,363	
			Contingency	\$ 675,345	
			TOTAL	\$ 2,363,708	

Real Estate Costs	ac	2,731.6	\$ 3,000 /ac	\$ 8,194,890
			TOTAL	\$ 10,558,598

Total acreage	2,731.6
Cost per acre	\$ 3,865
Ecological lift potential	1,953.0
Cost per unit lift	\$ 5,406

Wetland Restoration Planning Level Cost Estimation

Parcel No: LI07

Exotic and Nuisance Species Removal

Wetland No.	Wetland Type	Acres	Unit Price	Cost	Comments
W1	6440	0.15	\$ 1,500 /ac	\$ 222	10% of wetland acreage
TOTAL		0.15		\$ 222	

Fill Ditches	Size	Length (ft)	Unit Price	Cost
	small	27,000	\$ 1.50 /ft	\$ 40,500
	medium	5,250	\$ 5.50 /ft	\$ 28,875
	large	0	\$ 18.50 /ft	\$ -
TOTAL				\$ 69,375

Other Site Work	Unit	Number	Unit Price	Cost
Install Trees	ac	45	\$ 4,540 /ac	\$ 203,237
TOTAL				\$ 203,237

Wetland Buffer Restoration	Unit	Quantity	Unit Price	Cost
Herbicide	ac	239.5	\$ 150 /ac	\$ 35,930
Seed and Mulch	ac	155.9	\$ 400 /ac	\$ 62,360
TOTAL				\$ 98,290

SUBTOTAL	\$ 371,123
Mobilization	\$ 37,112
SUBTOTAL	\$ 408,236
Contingency	\$ 163,294
TOTAL	\$ 571,530

Real Estate Costs	ac	241.0	\$ 3,000 /ac	\$ 723,030
TOTAL				\$ 1,294,560

Total acreage	241.0
Cost per acre	\$ 5,371
Ecological lift potential	160.3
Cost per unit lift	\$ 8,076

Wetland Restoration Planning Level Cost Estimation

Parcel No: LI10

Exotic and Nuisance Species Removal

Wetland No.	Wetland Type	Acres	Unit Price	Cost	
W1	6110	0.66	\$ 1,500 /ac	\$ 989	10% of wetland acreage
W2 - W3	6410	4.20	\$ 1,500 /ac	\$ 6,300	20% of wetland acreage
	TOTAL	4.86		\$ 7,289	
Fill Ditches	Size	Length (ft)	Unit Price	Cost	
	small	3,000	\$ 1.50 /ft	\$ 4,500	
	medium	54,300	\$ 5.50 /ft	\$ 298,650	
	large	13,500	\$ 18.50 /ft	\$ 249,750	
		TOTAL		\$ 552,900	
Other Site Work	Size	Length (ft)	Unit Price	Cost	
Install berm	medium	18,000	\$ 5.50 /ft	\$ 99,000	
Ditch Blocks	Size	Quantity	Unit Price	Cost	
	medium	2	\$ 200 ea	\$ 400	
	large	5	\$ 756 ea	\$ 3,780	
		TOTAL		\$ 103,180	
Wetland Buffer Restoration	Size	Quantity	Unit Price	Cost	
Herbicide	ac	467.2	\$ 150 /ac	\$ 70,083.00	
Seed and Mulch	ac	84.7	\$ 400 /ac	\$ 33,884.00	
		TOTAL		\$ 103,967	
SUBTOTAL				\$ 767,336	
Mobilization				\$ 76,734	
SUBTOTAL				\$ 844,069	
Contingency				\$ 337,628	
TOTAL				\$ 1,181,697	
Real Estate Costs	ac	495.6	\$ 3,000 /ac	\$ 1,486,800	
TOTAL				\$ 2,668,497	

Total acreage	495.6
Cost per acre	\$ 5,384
Ecological lift potential	461.5
Cost per unit lift	\$ 5,782

Wetland Restoration Planning Level Cost Estimation						
Parcel No: LI11						
Exotic and Nuisance Species Removal						
Wetland No.	Wetland Type	Acres	Unit Price	Cost	Comments	
W1 - W3	6150	0.35	\$ 1,500 /ac	\$ 530	10% of wetland acreage	
W4 - W5	6410	4.61	\$ 3,000 /ac	\$ 13,818	20% of wetland acreage	
W6	6430	0.24	\$ 1,500 /ac	\$ 366	10% of wetland acreage	
TOTAL		5.20		\$ 14,714		
Fill Ditches	Size	Length (ft)	Unit Price	Cost		
	small	23,000	\$ 1.50 /ft	\$ 34,500	23,000	Total length
	medium	12,700	\$ 5.50 /ft	\$ 69,850	12,700	Total length
	large	1,900	\$ 18.50 /ft	\$ 35,150	5,400	Total length
		TOTAL		\$ 139,500		
Other Site Work	Size	Length (ft)	Unit Price	Cost		
Install berm	medium	4,200	\$ 5.50 /ft	\$ 23,100		along roadway/residential area
Remove road	medium	7,500	\$ 9 /ft	\$ 67,500		
		TOTAL		\$ 90,600		
Wetland Buffer Restoration	Unit	Quantity	Unit Price	Cost		
Herbicide	ac	543.1	\$ 150 /ac	\$ 81,465		
Regrade Upland	ac	8.2	\$ 15,000 /ac	\$ 123,000		w/l wetland buffer
Seed and Mulch	ac	73.1	\$ 400 /ac	\$ 29,236		
		TOTAL		\$ 233,701		
		SUBTOTAL		\$ 478,515		
		Mobilization		\$ 47,851		
		SUBTOTAL		\$ 526,366		
		Contingency		\$ 210,546		
		TOTAL		\$ 736,912		
Real Estate Costs	ac	628.9	\$ 3,000 /ac	\$ 1,886,730		
		TOTAL		\$ 2,623,642		

Total acreage	628.9
Cost per acre	\$ 4,172
Ecological lift potential	561.9
Cost per unit lift	\$ 4,669

Wetland Restoration Planning Level Cost Estimation

Parcel No: LI12

Exotic and Nuisance Species Removal

Wetland No.	Wetland Type	Acres	Unit Price	Cost
W1 - W2	6:150	0.75	\$ 1,500 /ac	\$ 1,127
TOTAL		0.75		\$ 1,127
Fill Ditches	Size	Length (ft)	Unit Price	Cost
	small	19,200	\$ 1.50 /ft	\$ 28,800
	medium	8,700	\$ 5.50 /ft	\$ 47,850
	large	500	\$ 18.50 /ft	\$ 9,250
TOTAL				\$ 85,900

Other Site Work	Unit	Quantity	Unit Price	Cost
Fill open water	ac	9.6	\$ 29,035 /ac	\$ 279,952
TOTAL				\$ 279,952

Wetland Buffer Restoration	Unit	Quantity	Unit Price	Cost
Herbicide	ac	546.2	\$ 150 /ac	\$ 81,933
Regrade Upland	ac	160.7	\$ 15,000 /ac	\$ 2,410,468
Seed and Mulch	ac	362.5	\$ 400 /ac	\$ 144,988
TOTAL				\$ 2,637,389

SUBTOTAL			\$ 3,004,368	
Mobilization			\$ 300,437	
SUBTOTAL			\$ 3,304,804	
Contingency			\$ 1,321,922	
TOTAL			\$ 4,626,726	
Real Estate Costs	ac	553.7	\$ 3,000 /ac	\$ 1,661,190
TOTAL				\$ 6,287,916

Total acreage	553.7
Cost per acre	\$ 11,356
Ecological lift potential	510.5
Cost per unit lift	\$ 12,317

10% of wetland acreage
40,400 Total length
8,700 Total length
500 Total length

Dairy farm area

Wetland Restoration Planning Level Cost Estimation						
Parcel No: L113						
Exotic and Nuisance Species Removal						
Wetland No.	Wetland Type	Acreage	Unit Price	Cost	Comments	
W1 - W3	6300	4.45	\$ 1,500 /ac	\$ 6,680	10% of wetland acreage	
W4 - W14	6410	6.10	\$ 1,500 /ac	\$ 9,150	20% of wetland acreage	
W15 -W16	6430	15.58	\$ 1,500 /ac	\$ 23,376	10% of wetland acreage	
	TOTAL	26.137		\$ 39,206		
Fill Ditches	Size	Length (ft)	Unit Price	Cost		
	small	14,100	\$ 1.50 /ft	\$ 21,150	14,100 Total length	
	medium	4,500	\$ 5.50 /ft	\$ 24,750	4,500 Total length	
	large	3,800	\$ 18.50 /ft	\$ 70,300	5,800 Total length	
		TOTAL		\$ 116,200		
Other Site Work	Unit	Quantity	Unit Price	Cost		
Fill Open Water	ac	3.26	\$ 29,035 /ac	\$ 94,654		
Ditch Blocks	Size	Quantity	Unit Price	Cost		
	medium		\$ 200 ea	\$ -		
	large	1	\$ 756 ea	\$ 756		
		TOTAL		\$ 95,410		
Wetland Buffer Restoration	Unit	Quantity	Unit Price	Cost		
Herbicide	ac	409.2	\$ 150 /ac	\$ 61,380		
Seed and Mulch	ac	333.5	\$ 400 /ac	\$ 133,400		
		TOTAL		\$ 194,780		
Real Estate Costs	ac	640.1	\$ 3,000 /ac	\$ 1,920,300		
		TOTAL		\$ 2,606,517		
		SUBTOTAL		\$ 445,596		
		Mobilization		\$ 44,560		
		SUBTOTAL		\$ 490,155		
		Contingency		\$ 196,062		

Total acreage	640.1
Cost per acre	\$ 4,072
Ecological lift potential	337.6
Cost per unit lift	\$ 7,721

Wetland Restoration Planning Level Cost Estimation

Parcel No: LI14

Exotic Nuisance Species Removal

Wetland No.	Wetland Type	Acres	Unit Price	Cost	
W1 - W30	6150	83.6	\$ 1,500 /ac	\$ 125,364	10% of wetland acreage
W31 - W41	6410	5.2	\$ 1,500 /ac	\$ 7,800	20% of wetland acreage
W42 - W59	6430	16.9	\$ 1,500 /ac	\$ 25,320	10% of wetland acreage
TOTAL		105.7		\$ 158,484	

Fill Ditches	Size	Length (ft)	Unit Price	Cost	
	small	339,000	\$ 1.50 /ft	\$ 508,500	339,000 Total length
	medium	25,500	\$ 5.50 /ft	\$ 140,250	25,500 Total length
	large	22,500	\$ 18.50 /ft	\$ 416,250	22,500 Total length
		TOTAL		\$ 1,065,000	

Other Site Work	Size	Length (ft)	Unit Price	Cost	
Install berm	medium	24,000	\$ 5.50 /ft	\$ 132,000	
		TOTAL		132,000	

Wetland Buffer Restoration	Unit	Quantity	Unit Price	Cost	
Herbicide	ac	4,674.5	\$ 150 /ac	\$ 701,175	1850 acres of sod
Seed and Mulch	ac	2,224.0	\$ 400 /ac	\$ 889,604	
		TOTAL		\$ 1,590,779	

Real Estate Costs	ac	5,705.2	\$ 3,000 /ac	\$ 17,115,720	
		TOTAL		\$ 21,652,965	

Total acreage	5,705.2
Cost per acre	\$ 3,795
Habitat units of lift	4,337.9
Cost per unit lift	\$ 4,992

Wetland Restoration Planning Level Cost Estimation

Parcel No: LI17

Exotic and Nuisance Species Removal

Wetland No.	Wetland Type	Acres	Unit Price	Cost	
W1 - W13	6150	6.38	\$ 1,500 /ac	\$ 9,566	10% of wetland acreage
W14 - W15	6440	0.40	\$ 1,500 /ac	\$ 600	20% of wetland acreage
TOTAL		6.78		\$ 10,166	
Fill Ditches	Size	Length (ft)	Unit Price	Cost	
	small	19,000	\$ 1.50 /ft	\$ 28,500	19,000 Total length
	medium	5,000	\$ 5.50 /ft	\$ 27,500	5,000 Total length
	large	6,800	\$ 18.50 /ft	\$ 125,800	68,000 Total length
TOTAL				\$ 181,800	

Other Site Work	Size	Length (ft)	Unit Price	Cost	
Install berm	medium	2,500	\$ 5.50 /ft	\$ 13,750	Around residential area
TOTAL				\$ 13,750	

Wetland Buffer Restoration	Unit	Quantity	Unit Price	Cost	
Herbicide	ac	1,262.97	\$ 150 /ac	\$ 189,446	
Regrade Buffer	ac	50	\$ 15,000 /ac	\$ 750,000	Row crops
Seed and Mulch	ac	250.0	\$ 400 /ac	\$ 100,008	
TOTAL				\$ 1,039,454	

SUBTOTAL		\$ 1,245,169
Mobilization		\$ 124,517
SUBTOTAL		\$ 1,369,686
Contingency		\$ 547,875
TOTAL		\$ 1,917,561

Real Estate Costs	ac	1,269.8	\$ 3,000 /ac	\$ 3,809,250
TOTAL				\$ 5,726,811

Total acreage	1,269.8
Cost per acre	\$ 4,510
Ecological lift potential	1,090.4
Cost per unit lift	\$ 5,252

Wetland Restoration Planning Level Cost Estimation

Parcel No: LI18

Exotic and Nuisance Species Removal

Wetland No.	Wetland Type	Acres	Unit Price	Cost
W1 - W12	6150	25.72	\$ 1,500 /ac	\$ 38,579
W13 - W25	6400	8.40	\$ 1,500 /ac	\$ 12,600
		0	\$ 1,500 /ac	\$ -
TOTAL		34.12		\$ 51,179

Fill Ditches	Size	Length (ft)	Unit Price	Cost
	small	0	\$ 1.50 /ft	\$ -
	medium	600	\$ 5.50 /ft	\$ 3,300
	large	0	\$ 18.50 /ft	\$ -
		TOTAL		\$ 3,300

Wetland Buffer Restoration	Unit	Quantity	Unit Price	Cost
Herbicide	ac	96.1	\$ 150 /ac	\$ 14,414
Seed and Mulch	ac	36.1	\$ 400 /ac	\$ 14,436
		TOTAL		\$ 28,850

SUBTOTAL	\$ 83,328
Mobilization	\$ 8,333
SUBTOTAL	\$ 91,661
Contingency	\$ 36,664
TOTAL	\$ 128,325

Real Estate Costs	ac	\$ 3,000 /ac	\$ 1,186,560
		TOTAL	\$ 1,314,885

Total acreage	395.5
Cost per acre	\$ 3,324
Ecological lift potential	43.0
Cost per unit lift	\$ 30,579

Wetland Restoration Planning Level Cost Estimation						
Parcel No: LI21						
Exotic and Nuisance Species Removal						
Wetland No.	Wetland Type	Acreeage	Unit Price	Cost		
W1 - W4	6150	11.54	\$ 1,500 /ft	\$ 17,304	10% of wetland acreage	
W5	6410	0.10	\$ 1,500 /ft	\$ 150	20% of wetland acreage	
TOTAL		11.636		\$ 17,454		
Fill Ditches	Size	Length (ft)	Unit Price	Cost		
	small	17,000	\$ 1.50 /ft	\$ 25,500		
	medium	11,400	\$ 5.50 /ft	\$ 62,700		
	large	700	\$ 18.50 /ft	\$ 12,950		
TOTAL				\$ 101,150		
Other Site Work	Size	Length (ft)	Unit Price	Cost		
Install berm	medium	6,000	\$ 5.50 /ft	\$ 33,000		
TOTAL				\$ 33,000		
Wetland Buffer Restoration	Unit	Quantity	Unit Price	Cost		
Herbicide	ac	161.4	\$ 150 /ac	\$ 24,210		
Regrade Buffer	ac	5	\$ 15,000 /ac	\$ 75,000		
Seed and Mulch	ac	30.38	\$ 400 /ac	\$ 12,152	existing homesteads – does not include future	
TOTAL				\$ 111,362		
SUBTOTAL				\$ 262,966		
Mobilization				\$ 26,297		
SUBTOTAL				\$ 289,263		
Contingency				\$ 115,705		
TOTAL				\$ 404,968		
Real Estate Costs	ac	277.2	\$ 3,000 /ac	\$ 831,570		
TOTAL				\$ 1,236,538		
Total acreage	277.2					
Cost per acre	\$ 4,461					
Ecological lift potential	137.9					
Cost per unit lift	\$ 8,967					

Wetland Restoration Planning Level Cost Estimation

Parcel No: LI22

Exotic and Nuisance Species Removal

Wetland No.	Wetland Type	Acres	Unit Price	Cost
W1 - W3	6150	15.77	\$ 1,500 /ac	\$ 23,651
W4	6410	16.60	\$ 1,500 /ac	\$ 24,900
TOTAL		32.37		\$ 48,551

Fill Ditches	Size	Length (ft)	Unit Price	Cost
	small	1,600	\$ 1.50 /ft	\$ 2,400
	medium	32,500	\$ 5.50 /ft	\$ 178,750
		TOTAL		\$ 181,150

Other Site Work	Size	Length (ft)	Unit Price	Cost
Install berm	medium	9,700	\$ 5.50 /ft	\$ 53,350
		TOTAL		\$ 53,350

Wetland Buffer Restoration	Unit	Quantity	Unit Price	Cost
Herbicide	ac	34.3	\$ 150 /ac	\$ 5,150
Seed and Mulch	ac	13.5	\$ 400 /ac	\$ 5,388
		TOTAL		\$ 10,538

		SUBTOTAL	\$	293,588
		Mobilization	\$	29,359
		SUBTOTAL	\$	322,947
		Contingency	\$	129,179
		TOTAL	\$	452,126

Real Estate Costs	ac	275.3	\$ 3,000 /ac	\$ 825,930
		TOTAL		\$ 1,278,056

Total acreage	275.3
Cost per acre	\$ 4,642
Ecological lift potential	41.4
Cost per unit lift	\$ 30,871

Wetland Restoration Planning Level Cost Estimation					
Parcel No: LI24					
Exotic and Nuisance Species Removal					
Wetland No.	Wetland Type	Acres	Unit Price	Cost	
W1 - W2	6110/6170	1.13	\$ 1,500 /ac	\$ 1,697	10% of wetland acreage
TOTAL		1.13		\$ 1,697	
Fill Ditches	Size	Length (ft)	Unit Price	Cost	
	small	6,000	\$ 1.50 /ft	\$ 9,000	
	medium	4,400	\$ 5.50 /ft	\$ 24,200	
	large	6,600	\$ 18.50 /ft	\$ 122,100	
TOTAL				\$ 155,300	
Other Site Work	Size	Length (ft)	Unit Price	Cost	
Install berm	medium	2,400	\$ 5.50 /ft	\$ 13,200	
TOTAL				\$ 13,200	
Wetland Buffer Restoration	Unit	Quantity (ft)	Unit Price	Cost	
Herbicide	ac	65.5	\$ 150 /ft	\$ 9,825	
TOTAL				\$ 9,825	
SUBTOTAL				\$ 180,022	
Mobilization				\$ 18,002	
SUBTOTAL				\$ 198,024	
Contingency				\$ 79,209	
TOTAL				\$ 277,233	
Real Estate Costs	ac	76.8	\$ 3,000 /ac	\$ 230,430	
TOTAL				\$ 507,663	
Total acreage		76.8			
Cost per acre	\$	6,609			
Ecological lift potential		65.4			
Cost per unit lift	\$	7,762			

Wetland Restoration Planning Level Cost Estimation

Parcel No: T03

Exotic and Nuisance Species Removal

Wetland No.	Wetland Type	Acres	Unit Price	Cost	Comments
W1 - W17	6410	6.6	\$ 1,500 /ac	\$ 9,900	20% of wetland acreage
W2 - W9	6430	0.23	\$ 1,500 /ac	\$ 345	10% of wetland acreage
TOTAL		6.83		\$ 10,245	

Fill Ditches

Size	Length (ft)	Unit Price	Cost
small	35,250	\$ 1.50 /ft	\$ 52,875
medium	21,250	\$ 5.50 /ft	\$ 116,875
large	3,500	\$ 18.50 /ft	\$ 64,750
TOTAL			\$ 234,500

Other Site Work

Size	Length (ft)	Unit Price	Cost
medium	11,000	\$ 5.50 /ft	\$ 60,500
dirt	14,000	\$ 9 /ft	\$ 126,000
TOTAL			\$ 186,500

Wetland Buffer Restoration

Unit	Size	Unit Price	Cost
ac	4665.5	\$ 150 /ac	\$ 699,825
ac	3850.84	\$ 400/ac	\$ 1,540,336
TOTAL			\$ 2,240,161

Real Estate Costs

ac	4,700.6	\$ 6,000 /ac	\$ 28,203,600
TOTAL			\$ 32,317,565

Total acreage	4,700.6
Cost per acre	\$ 6,875
Ecological lift potential	3,896.4
Cost per unit lift	\$ 8,294

Wetland Restoration Planning Level Cost Estimation

Parcel No: T18

Exotic and Nuisance Species Removal

Wetland No.	Wetland Type	Acreeage	Unit Price	Cost	
W1	6150	1.80	\$ 1,500 /ft	\$ 2,693	10% of wetland acreage
W2 - W9	6410	12.30	\$ 1,500 /ft	\$ 18,450	20% of wetland acreage
W10 -W13	6430	3.26	\$ 1,500 /ft	\$ 4,890	10% of wetland acreage
	TOTAL	17.36		\$ 26,033	
Fill Ditches	Size	Length (ft)	Unit Price	Cost	
	small	4,500	\$ 1.50 /ft	\$ 6,750	85,381 Total length
	medium	7,200	\$ 5.50 /ft	\$ 39,600	12,431 Total length
	large	10,200	\$ 18.50 /ft	\$ 188,700	13,964 Total length
		TOTAL		\$ 235,050	
Other Site Work	Size	Length (ft)	Unit Price	Cost	
Install berm	medium	12,000	\$ 5.50	\$ 66,000	along roadway/residential areas
Ditch Blocks	Size	Quantity	Unit Price	Cost	
	medium	2	\$ 200 ea	\$ 400	
	large	3	\$ 756 ea	\$ 2,268	
		TOTAL		\$ 68,668	
Wetland Buffer Restoration	Unit	Size	Unit Price	Cost	
Herbicide	ac	1239	\$ 150 /ac	\$ 185,850	
Seed and Mulch	ac	525.2	\$ 400 /ac	\$ 210,080	
		TOTAL		\$ 395,930	
Real Estate Costs	ac	1,351.0	\$ 6,000 /ac	\$ 8,106,000	
	TOTAL			\$ 9,223,548	
		SUBTOTAL		\$ 725,681	
		Mobilization		\$ 72,568	
		SUBTOTAL		\$ 798,249	
		Contingency		\$ 319,299	
		TOTAL		\$ 1,117,548	

Total acreage	1,351.0
Cost per acre	\$ 6,827
Habitat units of lift	1,094.4
Cost per unit lift	\$ 8,428

Wetland Restoration Planning Level Cost Estimation

Parcel No: T19

Exotic and Nuisance Species Removal

Wetland No.	Wetland	Acres	Unit Price	Cost	
W1 - W3	6170	1.23	\$ 1,500 /ac	\$ 1,845	10% of wetland acreage
W4 - W6	6300	6.22	\$ 1,500 /ac	\$ 9,330	10% of wetland acreage
W7 - W43	6400	6.47	\$ 1,500 /ac	\$ 9,705	10% of wetland acreage
TOTAL		13.92		\$ 20,880	

Fill Ditches	Size	Length (ft)	Unit Price	Cost	
	small	4,000	\$ 1.50 /ft	\$ 6,000	46,400 Total length
	medium	14,100	\$ 5.50 /ft	\$ 77,550	14,100 Total length
	large	21,300	\$ 18.50 /ft	\$ 394,050	63,200 Total length
		TOTAL		\$ 477,600	

Other Site Work	Unit	Size	Unit Price	Cost
Ditch Blocks	medium	3	\$ 200	\$ 600
		TOTAL		\$ 600

Wetland Buffer Restoration	Unit	Size	Unit Price	Cost
Herbicide	ac	1746.9	\$ 150 /ac	\$ 262,035
Regrade Buffer	ac	42	\$ 15,000 /ac	\$ 630,000
Seed and Mulch	ac	1174.04	\$ 400 /ac	\$ 469,616
		TOTAL		\$ 1,361,651

		SUBTOTAL		\$ 1,860,731
		Mobilization		\$ 186,073
		SUBTOTAL		\$ 2,046,804
		Contingency		\$ 818,722
		TOTAL		\$ 2,865,526

Real Estate Costs	ac	Cost
	1,855.0	\$ 6,000 /ac
	TOTAL	\$ 11,130,000
		\$ 13,995,526

Total acreage	1,855.0
Cost per acre	\$ 7,545
Habitat units of lift	1,714.5
Cost per unit lift	\$ 8,163

Wetland Restoration Planning Level Cost Estimation																																																
Parcel No: T20																																																
Exotic and Nuisance Species Removal																																																
Wetland No.	Wetland Type	Acres	Unit Price	Cost	Comments																																											
W1 - W4	6210	4.15	\$ 1,500 /ac	\$ 6,225	10% of wetland acreage																																											
W5 - W23	6410	17.15	\$ 3,000 /ac	\$ 51,450	20% of wetland acreage																																											
W24 - W32	6430	4.27	\$ 1,500 /ac	\$ 6,405	10% of wetland acreage																																											
TOTAL		25.57		\$ 64,080																																												
Fill Ditches	Size	Length (ft)	Unit Price	Cost																																												
	small	1,500	\$ 1.50 /ft	\$ 2,250	1,500 Total length																																											
	medium	4,250	\$ 5.50 /ft	\$ 23,375	4,250 Total length																																											
	large	0	\$ 18.50 /ft	\$ 0	30,000 Total length																																											
TOTAL				\$ 25,625																																												
Wetland Buffer Restoration	Unit	Size	Unit Price	Cost																																												
Herbicide	ac	1,341.83	\$ 150 /ac	\$ 201,275																																												
Seed and Mulch	ac	12.83	\$ 00 /ac	\$ 5,132																																												
TOTAL				\$ 206,407																																												
<table border="0" style="width: 100%;"> <tr> <td style="width: 50%;">SUBTOTAL</td> <td style="width: 10%;"></td> <td style="width: 10%;"></td> <td style="width: 10%;"></td> <td style="width: 10%;"></td> <td style="width: 5%;"></td> <td style="width: 5%;"></td> </tr> <tr> <td>Mobilization</td> <td></td> <td></td> <td></td> <td>\$ 296,112</td> <td></td> <td></td> </tr> <tr> <td>SUBTOTAL</td> <td></td> <td></td> <td></td> <td>\$ 29,611</td> <td></td> <td></td> </tr> <tr> <td>Contingency</td> <td></td> <td></td> <td></td> <td>\$ 325,723</td> <td></td> <td></td> </tr> <tr> <td>TOTAL</td> <td></td> <td></td> <td></td> <td>\$ 130,289</td> <td></td> <td></td> </tr> <tr> <td></td> <td></td> <td></td> <td></td> <td>\$ 456,012</td> <td></td> <td></td> </tr> </table>							SUBTOTAL							Mobilization				\$ 296,112			SUBTOTAL				\$ 29,611			Contingency				\$ 325,723			TOTAL				\$ 130,289							\$ 456,012		
SUBTOTAL																																																
Mobilization				\$ 296,112																																												
SUBTOTAL				\$ 29,611																																												
Contingency				\$ 325,723																																												
TOTAL				\$ 130,289																																												
				\$ 456,012																																												
Real Estate Costs	ac	3,386.0	\$ 6,000 /ac	\$20,316,000																																												
TOTAL				\$21,597,396																																												
Total acreage		3,386.0																																														
Cost per acre	\$	6,378																																														
Ecological lift potential		2,958.9																																														
Cost per unit lift	\$	7,299																																														

Wetland Restoration Planning Level Cost Estimation

Parcel No: T26

Exotic and Nuisance Species Removal

Wetland No.	Wetland Type	Acres	Unit Price	Cost	
OW1 - OW6	5100	1.1	\$ 1,500 /ac	\$ 1,650	10% of wetland acreage
W1 - W3	6150	1.6	\$ 1,500 /ac	\$ 2,400	10% of wetland acreage
W4 - W18	6410	6.0	\$ 1,500 /ac	\$ 9,000	20% of wetland acreage
W19 - W30	6430	5.3	\$ 1,500 /ac	\$ 7,950	10% of wetland acreage
TOTAL		14.0		\$ 21,000	

Fill Ditches

Size	Length (ft)	Unit Price	Cost	
small	30,000	\$ 1.50 /ft	\$ 45,000	334,000 Total length
medium	32,000	\$ 5.50 /ft	\$ 176,000	32,000 Total length
large	36,000	\$ 18.50 /ft	\$ 666,000	36,000 Total length
TOTAL			\$ 887,000	

Other Site Work

Unit	Length (ft)	Unit Price	Cost
medium	12,000	\$ 5.50 /ft	\$ 66,000

Wetland Buffer Restoration

Unit	Size	Unit Price	Cost
ac	2,242	\$ 150 /ac	\$ 336,360
ac	11	\$ 400 /ac	\$ 4,504
TOTAL			\$ 340,864

Herbicide

SUBTOTAL \$ 1,314,864			
Mobilization \$ 131,486			
SUBTOTAL \$ 1,446,350			
Contingency \$ 578,540			
TOTAL \$ 2,024,891			

Seed and Mulch

SUBTOTAL \$ 1,314,864			
Mobilization \$ 131,486			
SUBTOTAL \$ 1,446,350			
Contingency \$ 578,540			
TOTAL \$ 2,024,891			

Real Estate Costs

ac	2,352.0	\$ 6,000 /ac	\$ 14,112,000
TOTAL			\$ 16,136,891

Total Acreage

Total Acreage	2,352.0
Cost per acre	\$ 6,861
Ecological lift potential	2,244.2
Cost per unit lift	\$ 7,190

Wetland Restoration Planning Level Cost Estimation

Parcel No: T27

Exotic and Nuisance Species Removal

Wetland No.	Wetland Type	Acreage	Unit Price	Cost
OW 1 - OW 3	5100	23.16	\$ 29,035 /ac	\$ 672,451
W1 - W4	6110	29.7	\$ 1,500 /ac	\$ 44,550
W5 - W6	6170	18.9	\$ 1,500 /ac	\$ 28,350
Sugar Cane	2156	5,538.3	\$ 9,680	\$ 53,610,744
TOTAL		5,610.1		\$ 54,356,095

SUBTOTAL \$ 54,356,095
 Mobilization \$ 5,435,609
 SUBTOTAL \$ 59,791,704
 Contingency \$ 23,916,682
 TOTAL \$ 83,708,386

Real Estate Costs

ac	5,610.1	\$ 6,000 /ac	\$ 33,660,360
		TOTAL	\$ 117,368,746

Total Acreage	5,610.1
Cost per acre	\$ 20,921
Ecological lift potential	5,518.3
Cost per unit lift	\$ 21,269

Wetland Restoration Planning Level Cost Estimation

Parcel No: Six-Mile Marsh

Exotic and Nuisance Species Removal

Wetland No.	Wetland Type	Acres	Unit Price	Cost
W3 – W39	6170/6430	5.67	\$ 1,500 /ac	\$ 8,505
W1 – W57	6410	157.6	\$ 1,500 /ac	\$ 236,400
				10% of wetland acreage
				20% of wetland acreage

TOTAL	163.27	\$	244,905	
Fill Ditches	Size	Length (ft)	Unit Price	Cost
	small	3,600	\$ 1.50 /ft	\$ 5,400
	medium	1,700	\$ 5.50 /ft	\$ 9,350
	large	2,800	\$ 18.50 /ft	\$ 51,800
	TOTAL			\$ 66,550

Other Site Work	Size	Length (ft)	Unit Price	Cost
Install Berm	medium	15,000	\$ 5.50 /ft	\$ 82,500
				along roadway
		TOTAL		\$ 82,500

Wetland Buffer Restoration	Unit	Size	Unit Price	Cost
Herbicide	ac	535.2	\$ 150 /ac	\$ 80,280
Seed and Mulch	ac	254.8	\$ 400 /ac	\$ 101,920
		TOTAL		\$ 182,200

SUBTOTAL	\$	576,155
Mobilization	\$	57,616
SUBTOTAL	\$	633,771
Contingency	\$	253,508
TOTAL	\$	887,279

Real Estate Costs	ac	\$	3,000 /ac	\$	8,916,000
		TOTAL		\$	9,803,279

Total Acreage	2,972.0
Cost per acre	\$ 3,299
Ecological lift potential	2,001.2
Cost per unit lift	\$ 4,899