


Regional Facts & Information


How to Read the Regional Conceptual Recreation Plan

Please take a few minutes to look at the plan at www.evergladesplan.org and see how it fits within the framework of existing parks, greenways, and trails in your region of interest. Your knowledge of the local area is vital to the development of the regional plans. Public comments from previous meetings and comment periods have been incorporated into each plan. The recreational activities that are compatible with the features and intent of the proposed project are shown in each callout box. The recreational activities that are a regional need as detailed by the SCORP are shown as a red-colored activity icon. The recreational activities that were identified as needed during the public involvement process either at the public workshops or written comments are shown with a red pointer below the activity icon.

The following example shows how project recommendations are displayed in the plan:

Project name — SOUTHFORK NATURAL STORAGE & WATER QUALITY AREA
 Features: natural river, seasonally flooded wetlands, uplands, berms

Potential Recreation: 

Recommended Facilities: 

Red icon indicates SCORP need

Red pointer indicates public-identified need

Linkage opportunity information — The Southfork Area will soon become the Atlantic Ridge State Park (DEP), and it will be very accessible from Halpatiokee Regional Park. Atlantic Ridge is expected to provide hiking, biking, equestrian, and canoeing/kayaking opportunities.

The regional plans will provide guidance to the CERP project managers and project development teams to address recreational issues for each specific project. The regional program analysis will provide general information regarding existing recreational needs and recreation opportunities in the broad regional area. The conceptual recreation plan displays this information for each project to be further developed in the project implementation report.

2008 Public Meeting Schedule

April 14	West Palm Beach
April 15	Fort Lauderdale
April 16	Florida City
April 21	Miami
April 28	Davie
April 29	Ft. Myers
May 5	Okeechobee
May 6	Belle Glade
May 7	Ft. Pierce



Meeting times and locations are subject to change. Please refer to the following website for complete and up-to-date meeting info, comment forms and other materials at www.evergladesplan.org/pm/progr_master_rec_plan.cfm, or call **1-877-CERP-USA**.

For More Information



Corps Project Manager
 Shauna Allen
 P.O. Box 4970
 Jacksonville, FL 32232-0019
shauna.r.allen@usace.army.mil



SFWMD Project Manager
 Jerry Krenz, AICP
 3301 Gun Club Rd.
 West Palm Beach, FL 33406
jkrenz@sfwmd.gov

www.evergladesplan.org

CERP Master Recreation Plan

Regional Facts & Information



April 2008

Purpose of the Regional Program Analysis and Conceptual Recreation Plans

The purpose of the Comprehensive Everglades Restoration Plan (CERP) Master Recreation Plan (MRP) is to develop a comprehensive plan for addressing recreation needs within the CERP study area on a regional basis. The MRP is an inventory and assessment of the land and water resources related to physical improvements, an analysis of resource use and a reevaluation of existing and future needs required to protect and improve the values of the resource base while ensuring compatibility with CERP restoration goals and objectives.



This fact sheet contains information about the development of the Regional Program Analysis Report and the eight conceptual recreation plans. The draft report and concept or 'idea' plans were developed based on preceding work, public and agency input. The report and plans will be essential elements of the MRP and are posted to evergladesplan.org for review and comment. The CERP MRP would serve as a guide in fostering an efficient and cost-effective project for natural resources, recreational and cultural management programs. The ultimate goal of the MRP is to provide recreation planning guidance to help fill projected Florida State Comprehensive Outdoor Recreation Plan (SCORP) recreation deficits, expressed public needs, and SFWMD or other non-federal sponsor management requirements. The MRP is a living document.

Status of the Regional Program Analysis and Conceptual Recreation Plans

Initial suitability mapping for the Master Recreation Plan began in June 2005. The mapping study looked at nine key recreation activities and how those activities might mesh with the surrounding landscape and restoration purposes of each project. After the maps were completed, the Corps of Engineers and Water Management District held 18 "listen and learn" public scoping workshops throughout South Florida, to gather public input regarding recreation demand and emerging



recreation issues. Following the workshops, we began on the regional program analysis and conceptual recreation plans. After public review and comment during the spring of 2008, the regional conceptual recreation plans will be finalized in the summer of 2008.

See the inside of this fact sheet for a look at the project timeline.

The SCORP

Every state publishes a SCORP. The purpose of the SCORP is to guide the development of a diverse, balanced, statewide outdoor recreation system geared toward meeting current and future needs. The planning process relies heavily on input from state, local and federal recreation suppliers, private suppliers, recreation user groups, environmental groups and interested citizens.

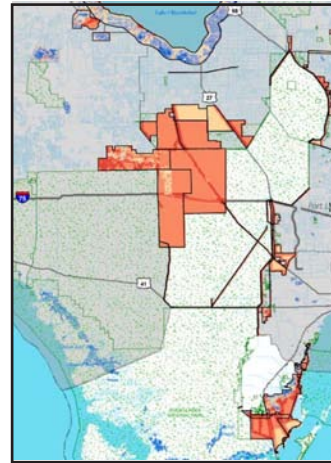
Information from public meetings and data developed from surveys provided the information necessary for SCORP planners to identify where demand for outdoor recreation exists. The Florida Department of Environmental Protection Division of Recreation and Parks updates SCORP for Florida.

Compatible with Restoration Mission?

Recreational activities planned for the CERP projects must be compatible with the overarching goal of CERP to restore the Everglades ecosystem. Proposed recreation activities must be compatible with the type of CERP project planned. For example, motor boating activities may be compatible with large open water (i.e., reservoirs) areas.

A geographic information system (GIS) based suitability study was undertaken in 2005-06 to help planners identify compatible recreation activities based on project type. Factors considered in this analysis included forest types, distance to roads or trails, degree of human-related impacts, scenic quality, or distance to water. These factors were used to help predict how suitable each project would be for various types of recreation.

To develop a compatibility program for the regional plans, the GIS suitability information was supplemented by an in-depth, project-by-project analysis. Planners reviewed documents such as the Comprehensive Everglades Restoration Plan to get a better picture of what projects might look like once they are built. Will the project have surface water? How about canals? What about wetlands, or upland areas for camping or hunting? By systematically reviewing each CERP project, these questions were answered. This helped to determine recommendations generated by the GIS study. In summary, the GIS study and the project-by-project analysis contributed to the potential compatibility information seen in the plans.



Regional Recreation Needs

When it comes to outdoor recreation, many areas throughout the country have a limited recreation supply relative to public demand for certain recreational activities.

Florida's SCORP found that there are many recreation needs that are currently not being met in South Florida. Across the southern part of the state, the SCORP found that there are not enough opportunities for bicycle riding and that hiking is a recreational need in almost all of the 16 CERP counties as well.

CERP projects in Broward, Miami-Dade, and Monroe County may be able to meet needs (in addition to hiking and biking) for fishing, camping, and hunting. Palm Beach, Martin and St. Lucie counties have needs for additional opportunities for fishing. Collier, Lee, Glades and Hendry counties have needs for camping and nature study. Okeechobee County has a need for more bank or pier-based fishing opportunities.

Project Timeline

CERP Master Recreation Plan



Regional Facts & Information

Public Workshops – 2006

In 2006, the Corps and SFWMD held a series of 18 public meetings to ask you questions about outdoor recreation. We asked you to give us feedback on the GIS-generated suitability maps, and we wanted to get your input on four topics:

- existing recreation conditions
- future recreation needs
- emerging recreation issues
- recreation trends



We took the information you gave us, compiled it, and categorized the comments. Recreation needs you identified were analyzed for each region. These will supplement the SCORP in helping to determine recreation needs and potential recreation opportunities in the future. The following table shows the regional distribution of comments based on findings about future recreation needs.

Public-identified Recreation Needs

(figures in the table indicate number of comments)

Region	Hiking/Trails	Bicycling	Fishing	Off-Road Vehicle / All-Terrain Vehicle Riding	Boat Access	Motorboating	Camping	Nature Study	Sightseeing	Nontraditional Activities	Horseback Riding	Hunting	Airboating	Education	Canoeing / Kayaking	Beach & Swim	Heritage
Everglades Agricultural Area	2	2	7	7	1	5	2	2	1	3	1	2	1	2	2	3	2
Water Preserve Areas	2	1	2	5	6	6	1	2	2	1	1	5	4	2	2	1	2
Lower West Coast	2	0	2	10	0	1	3	1	0	0	1	3	0	1	1	0	1
Lake Okeechobee Watershed	1	0	1	0	1	0	1	1	0	0	0	1	0	0	1	0	0
Upper East Coast	2	0	3	1	0	0	0	5	0	0	2	0	1	1	0	1	0
Miami-Dade County	2	3	7	7	4	3	4	2	2	2	3	5	4	2	2	2	3
Everglades, Florida Bay, & the Keys	3	2	2	3	3	1	4	2	0	0	0	0	3	1	3	1	0
Northern Palm Beach County	1	0	0	2	1	0	0	0	0	0	0	1	0	1	1	0	0
Miscellaneous	2	4	5	12	7	1	8	4	0	1	1	4	5	0	4	0	4
TOTAL	17	12	29	47	23	17	23	19	5	7	9	21	18	10	16	8	12

LEGEND:

Hiking/Trails	Bicycling	Fishing	Off-Road Vehicle / All-Terrain Vehicle Riding	Boat Access	Motorboating	Camping	Nature Study	Sightseeing	Nontraditional Activities	Horseback Riding	Hunting	Airboating	Education	Canoeing / Kayaking	Beach & Swim	Heritage
---------------	-----------	---------	---	-------------	--------------	---------	--------------	-------------	---------------------------	------------------	---------	------------	-----------	---------------------	--------------	----------

