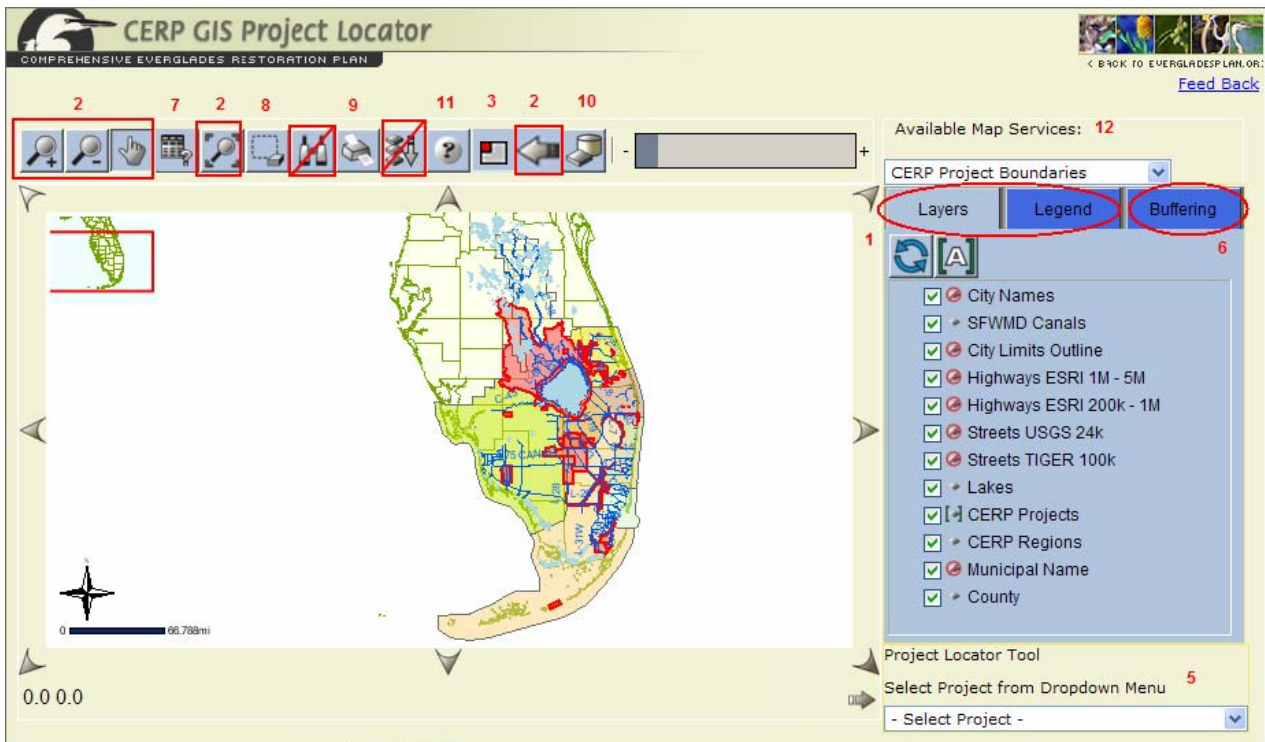
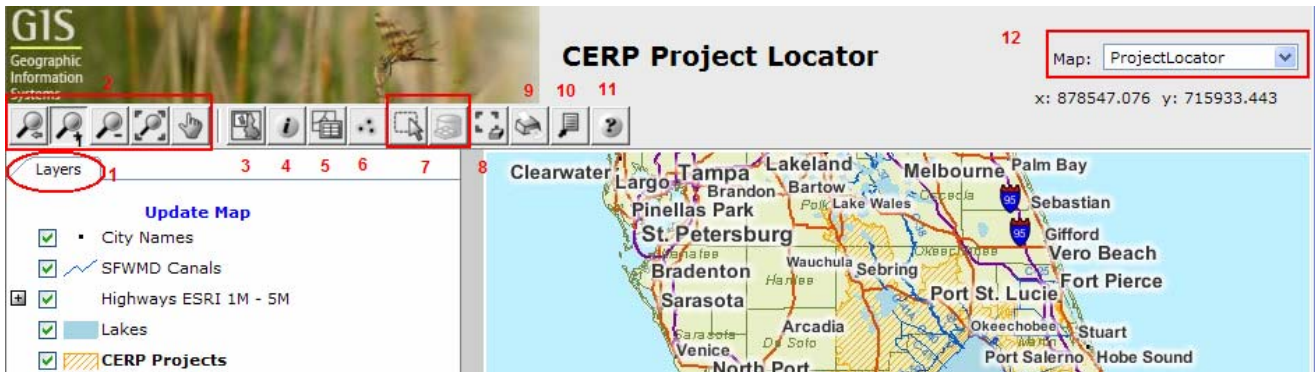


Project Locator – GeoViewer



1. TOC – Consolidated Legend and Layers tabs
2. Navigation Tools – Consolidated, added full extent icon
3. Map Overview
4. New Identify Drilldown – Select a location on the map to return feature attributes
5. Locate Project – Type in first few letters of a CERP Project or Component name to locate / zoom to on map. This tool replaces the Project Dropdown select.
6. Buffer – enhanced buffer capability
7. Display Selected Record Report
8. Clear Selection
9. Print
10. Layer Metadata Information
11. Help
12. Map Service – Consolidated vector and imagery into one map service